

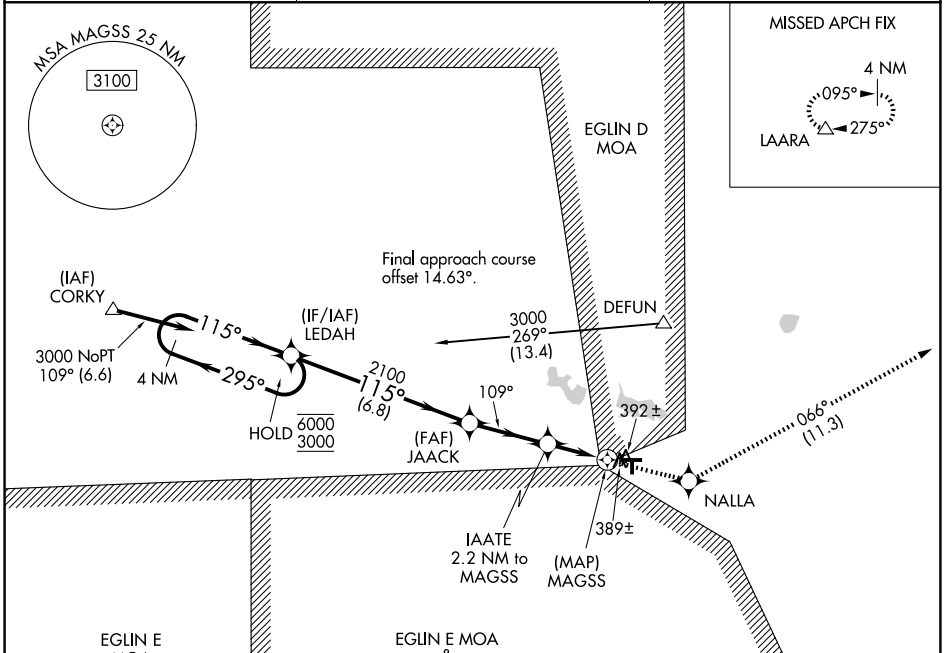
WAAS CH <b>40441</b> <b>W09A</b>	APP CRS <b>109°</b>	Rwy Ldg <b>4146</b> TDZE <b>289</b> Apt Elev <b>289</b>
--	------------------------	---

# RNAV (GPS) RWY 9

DEFUNIAK SPRINGS (54J)

RNP APCH - GPS.	MISSED APPROACH: Climb to 3000 direct NALLA and on track 066° to LAARA and hold.
<p>▼ Rwy 9 helicopter visibility reduction below 1 SM NA. Circling NA to Rwy 18 and 36. Straight-in, Circling Rwy 9 NA at night.</p>	

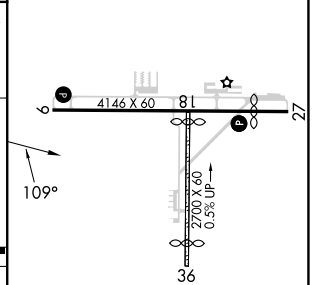
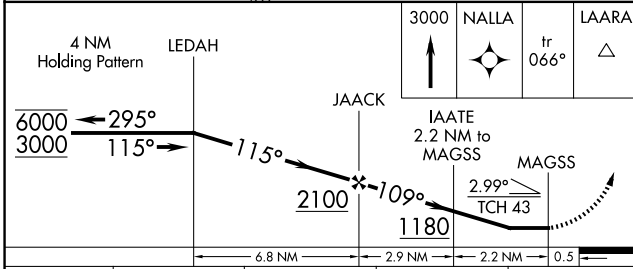
AWOS-3P <b>118.725</b>	EGLIN APP CON <b>124.05 284.65</b>	UNICOM <b>123.05 (CTAF) 0</b>
---------------------------	---------------------------------------	----------------------------------



SE-3, 16 APR 2026 to 14 MAY 2026

SE-3, 16 APR 2026 to 14 MAY 2026

ELEV 289	TDZE 289
----------	----------



CATEGORY	A	B	C	D
LP MDA	640-1	351 (400-1)		NA
LNAV MDA	660-1	371 (400-1)		NA
CIRCLING	800-1 511 (600-1)	920-1 631 (700-1)		NA

MIRL Rwy 9-27 <b>0</b>
------------------------