

APP CRS 253°	Rwy Ldg 4498
	TDZE 2241
	Apt Elev 2241

RNAV (GPS) RWY 25

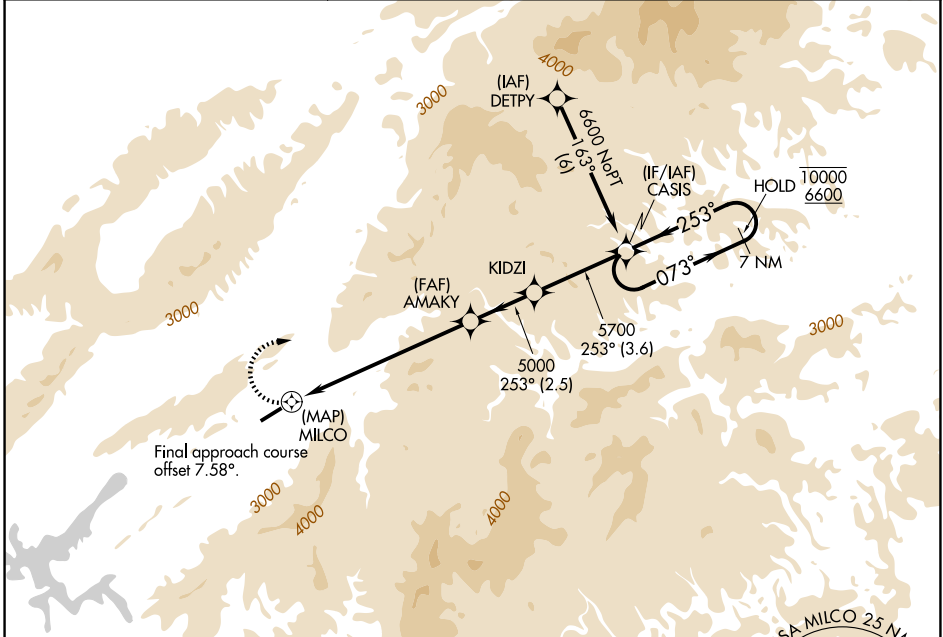
JOHNSON COUNTY (6A.4)

RNP APCH - GPS.

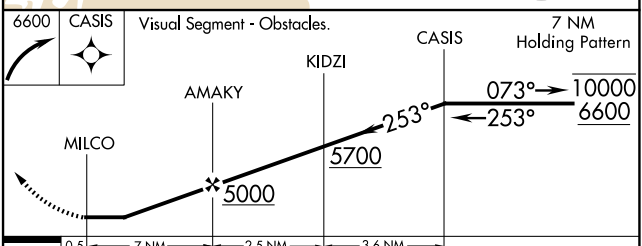
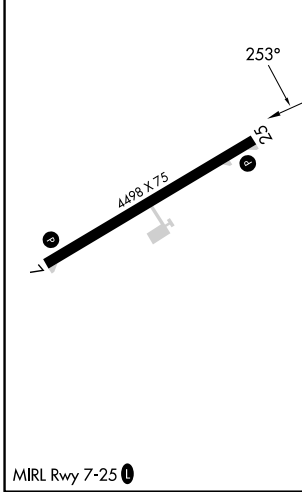
NA Rwy 25 helicopter visibility reduction below 1 SM NA. Circling NA for Cats C and D south of Rwy 7-25. When local altimeter setting not received, use Abingdon altimeter setting and increase all MDAs 80 feet. Procedure NA at night.

MISSED APPROACH:
Climbing right turn to 6600 direct CASIS and hold.

AWOS-3 126.225	TRI-CITY APP CON ★ 134.425 349.0	UNICOM 122.7 (CTAF)
--------------------------	--	-------------------------------



ELEV 2241	TDZE 2241
-----------	-----------



CATEGORY	A	B	C	D
LNAV MDA	4880-1¼ 2639 (2700-1¼)	4880-1½ 2639 (2700-1½)	4880-3	2639 (2700-3)
CIRCLING	4880-1¼ 2639 (2700-1¼)	4880-1½ 2639 (2700-1½)	4880-3	2639 (2700-3)

SE-1, 16 APR 2026 to 14 MAY 2026

SE-1, 16 APR 2026 to 14 MAY 2026