

APP CRS <b>065°</b>	Rwy Ldg <b>4498</b>
	TDZE <b>2240</b>
	Apt Elev <b>2241</b>

# RNAV (GPS) RWY 7

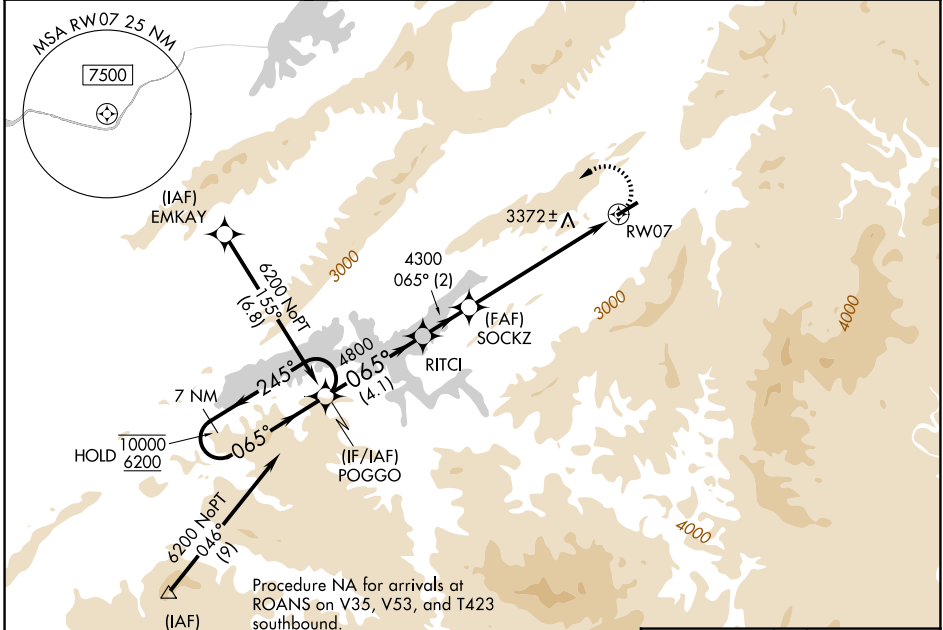
JOHNSON COUNTY (6A4)

RNP APCH - GPS

**⚠** Rwy 7 helicopter visibility reduction below 1 SM NA. Circling NA for Cat C south of Rwy 7-25. When local altimeter setting not received, use Abingdon altimeter setting and increase all MDAs 80 feet. Circling NA for Cats B and C when using Abingdon altimeter setting. Procedure NA at night.

**MISSED APPROACH:**  
Climbing left turn to 6200 direct POGGO and hold.

AWOS-3 <b>126.225</b>	TRI-CITY APP CON ★ <b>134.425 349.0</b>	UNICOM <b>122.7 (CTAF) 0</b>
--------------------------	--	---------------------------------

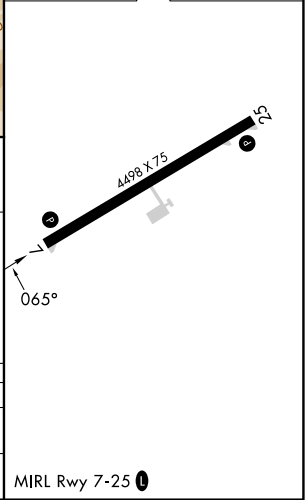
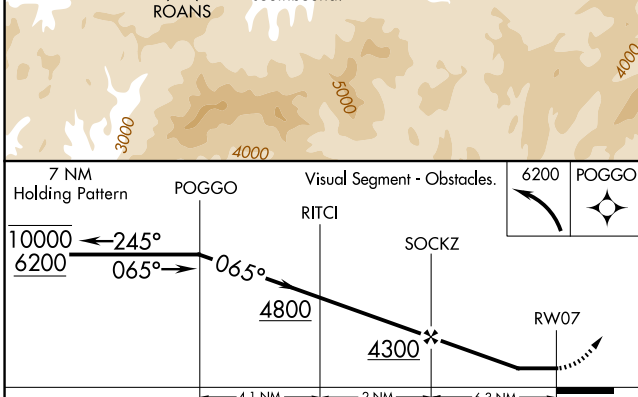


SE-1, 16 APR 2026 to 14 MAY 2026

SE-1, 16 APR 2026 to 14 MAY 2026

Procedure NA for arrivals at ROANS on V35, V53, and T423 southbound.

ELEV 2241	TDZE 2240
-----------	-----------



CATEGORY	A	B	C	D
LNVA MDA	4040-1¼ 1800 (1800-1¼)	4040-1½ 1800 (1800-1½)	4040-3 1800 (1800-3)	
CIRCLING	4040-1¼ 1799 (1800-1¼)	4260-1½ 2019 (2100-1½)	4260-3 2019 (2100-3)	NA

MIRL Rwy 7-25 0