

APP CRS **064°**  
 Rwy Ldg **4904**  
 TDZE **1575**  
 Apt Elev **1593**

# RNAV (GPS) RWY 6

WILLIAM B GREENE JR RGNL (ØA.9)

RNP APCH - GPS.

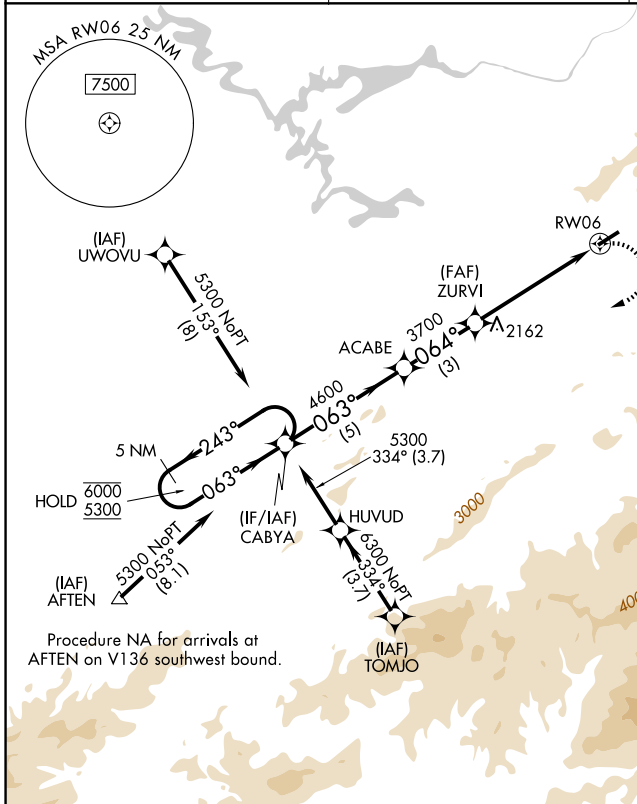
**⚠** Circling NA northwest of Rwy 6-24. Procedure NA at night.  
**⚠** Rwy 6 helicopter visibility reduction below 1 SM NA.  
**⚠** -10°C

MISSED APPROACH: (Do not exceed 200K until CABYA)  
 Climbing right turn to 5300  
 direct CABYA and hold.

AWOS-3PT  
**135.675**

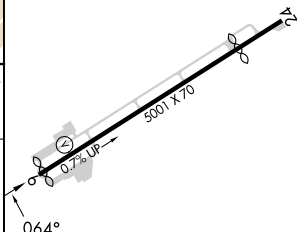
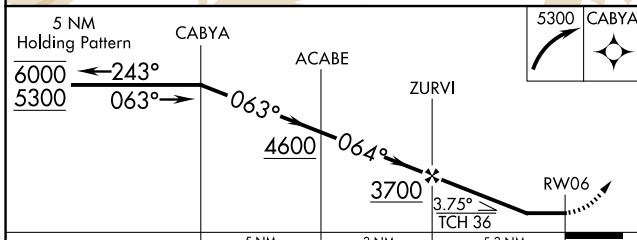
TRI CITY APP CON ★  
**134.425 349.0**

UNICOM  
**123.0 (CTAF) 0**



Procedure NA for arrivals at AFTEN on V136 southwest bound.

ELEV 1593 **D** TDZE 1575



CATEGORY	A	B	C	D
LNVA MDA	3080-1¼ 1505 (1500-1¼)	3160-1½ 1585 (1600-1½)	3260-3 1685 (1700-3)	NA
CIRCLING	3080-1¼ 1487 (1500-1¼)	3160-1½ 1567 (1600-1½)	3260-3 1667 (1700-3)	NA

REIL Rwy 6 **0**  
 LIRL Rwy 6-24 **0**

SE-1, 16 APR 2026 to 14 MAY 2026

SE-1, 16 APR 2026 to 14 MAY 2026