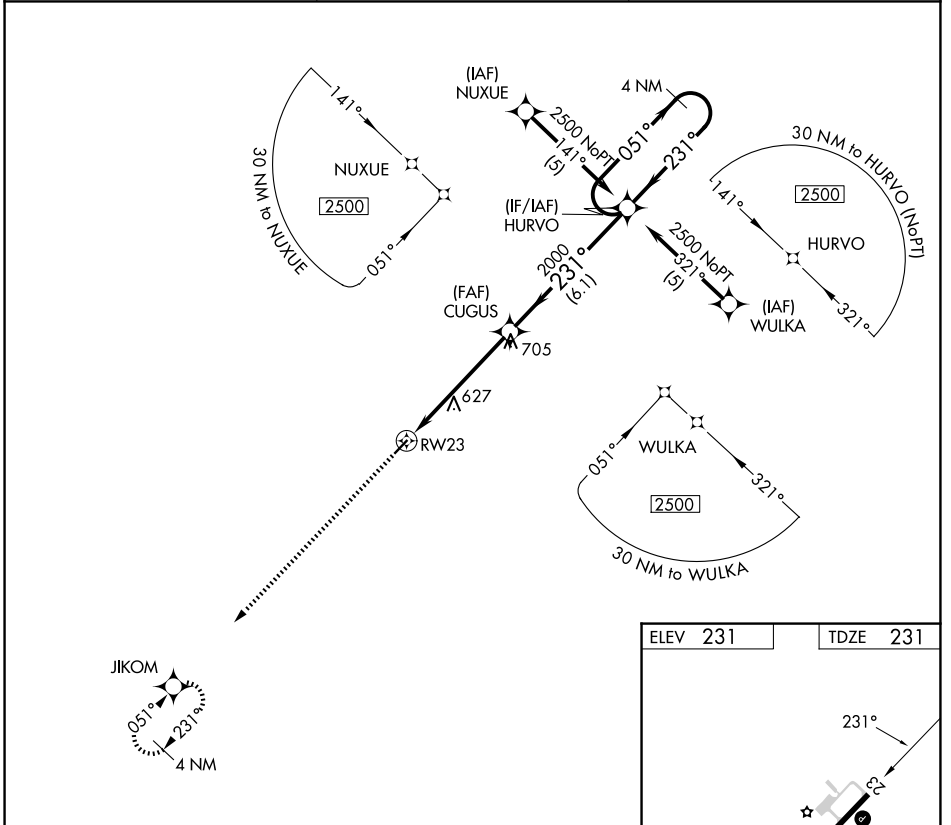


APP CRS	Rwy Ldg	3603
231°	TDZE	231
	Apt Elev	231

RNAV (GPS) RWY 23

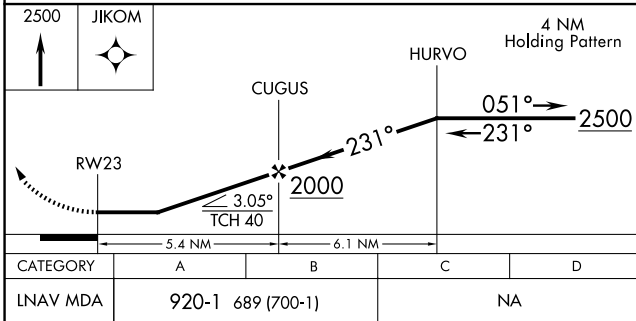
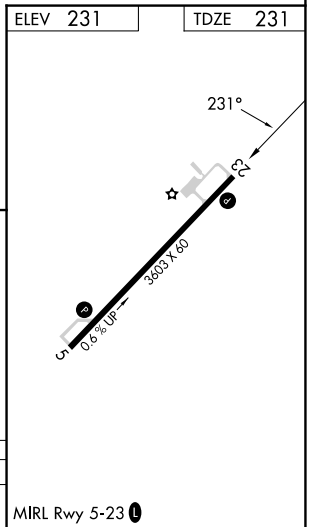
BAMBERG COUNTY (99N)

RNP APCH.		MISSED APPROACH: Climb to 2500 direct JIKOM and hold.
<p>▼ Procedure NA at night.</p> <p>▲ NA Rwy 23 helicopter visibility reduction below 1 SM NA. Use Orangeburg Muni altimeter setting; when not received, procedure NA.</p>		
OGB ASOS 118.525	COLUMBIA APP CON 124.15 338.2	UNICOM 122.8 (CTAF) 0



SE-2, 16 APR 2026 to 14 MAY 2026

SE-2, 16 APR 2026 to 14 MAY 2026



MIRL Rwy 5-23 0