

APP CRS	Rwy Ldg	<b>3603</b>
<b>051°</b>	TDZE	<b>226</b>
	Apt Elev	<b>231</b>

# RNAV (GPS) RWY 5

BAMBERG COUNTY (99N)

RNP APCH - GPS.

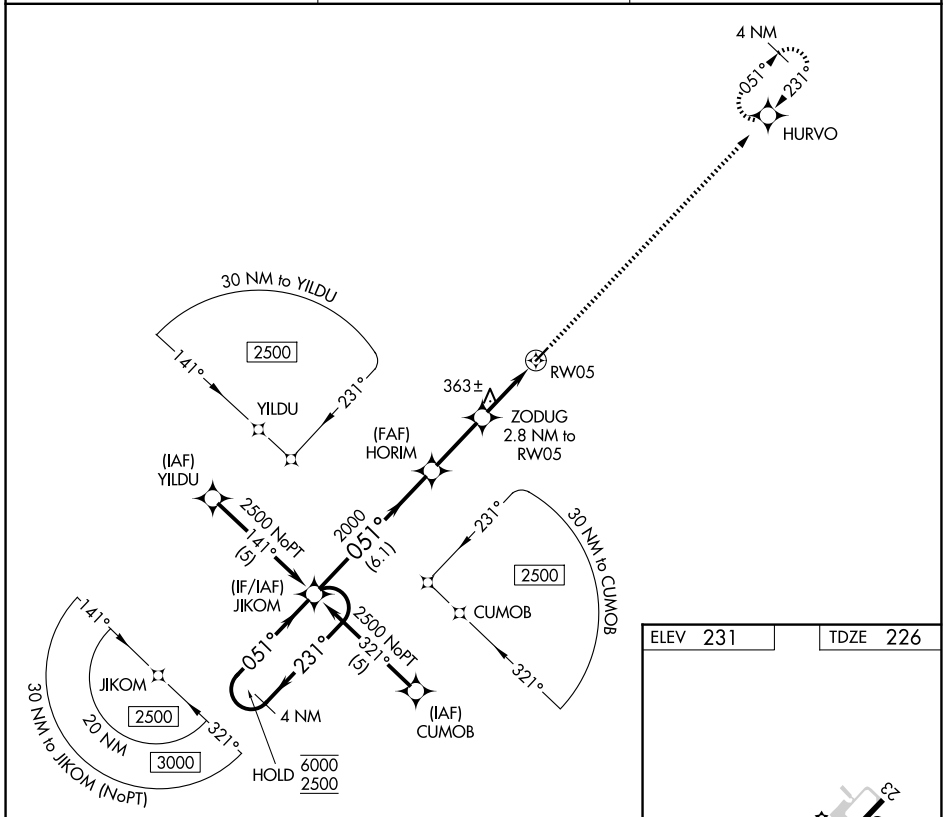
**▼** Rwy 5 helicopter visibility reduction below 1 SM NA. Procedure NA at night. Use OGB altimeter setting; when not received, procedure NA.

MISSED APPROACH: Climb to 2500 direct HURVO and hold.

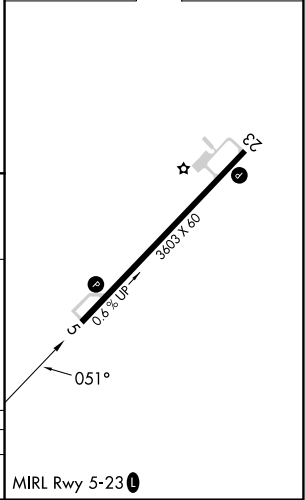
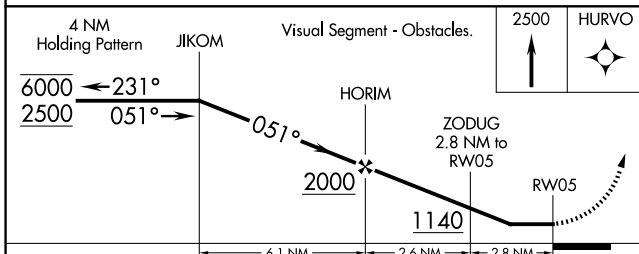
OGB ASOS  
**118.525**

COLUMBIA APP CON  
**124.15 338.2**

UNICOM  
**122.8 (CTAF) 0**



ELEV 231	TDZE 226
----------	----------



CATEGORY	A	B	C	D
LNAV MDA	740-1	514 (600-1)	NA	NA

MIRL Rwy 5-23 0

SE-2, 16 APR 2026 to 14 MAY 2026

SE-2, 16 APR 2026 to 14 MAY 2026