

LOUISVILLE, GEORGIA

AL-9837 (FAA)

26050

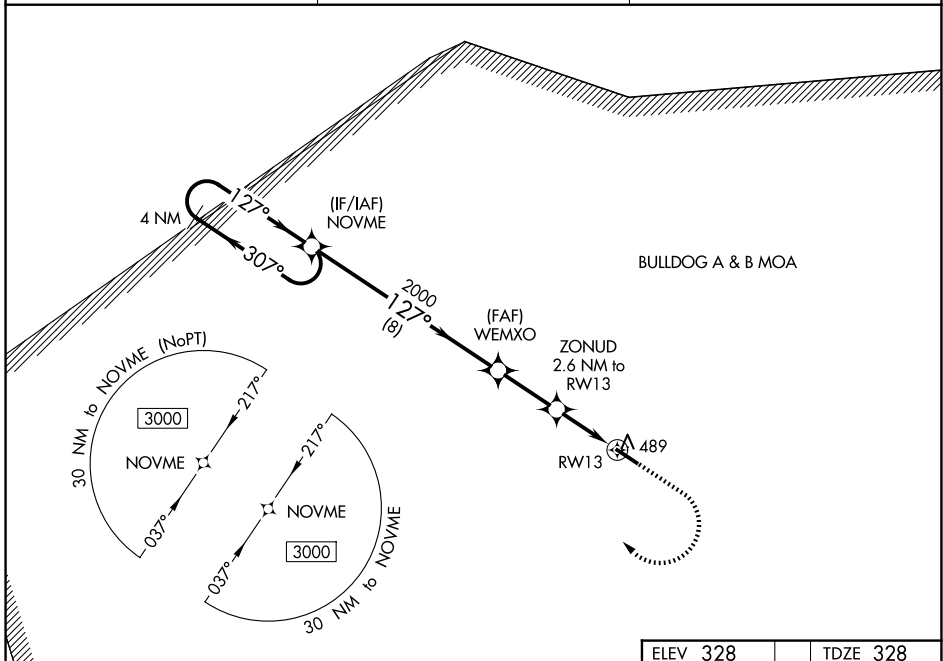
WAAS CH <b>56539</b> <b>W13A</b>	APP CRS <b>127°</b>	Rwy Ldg TDZE <b>328</b> Apt Elev <b>328</b>
--	------------------------	---

# RNAV (GPS) RWY 13

LOUISVILLE MUNI (2J3)

RNP APCH GPS.	MISSED APPROACH: Climb to 1000 then climbing right turn to 3000 direct NOVME and hold.
For uncompensated Baro-VNAV systems, LNAV/VNAV NA below -15°C or above 54°C. Rwy 13 helicopter visibility reduction below 3/4 SM NA.	

AWOS-3PT <b>119.35</b>	AUGUSTA APP CON <b>126.8 270.3</b>	CTAF <b>122.9</b>
---------------------------	---------------------------------------	----------------------



SE-4, 16 APR 2026 to 14 MAY 2026

SE-4, 16 APR 2026 to 14 MAY 2026

ELEV 328		TDZE 328	
VGSI and RNAV glidepath not coincident (VGSI Angle 3.83/TCH 23). 4 NM Holding Pattern 3000 ← 307° → 127° → 2000 → 1200 → RWY 13 GP 3.00° TCH 45 8 NM    2.5 NM    1.5 NM    1.1 NM			
1000 3000 NOVME			
CATEGORY LPV DA LNAV/VNAV DA LNAV MDA CIRCLING	A 578-1 768-1½ 800-1 840-1 512 (600-1)	B 250 (300-1) 440 (500-1½) 472 (500-1) 980-1 652 (700-1)	C 800-1½ 472 (500-1½) 800-1¾ 472 (500-1¾) 980-1¾ 652 (700-1¾)
			D 800-2 472 (500-2) 980-2 652 (700-2)
MIRL Rwy 13-31			

LOUISVILLE, GEORGIA  
Orig-B 10AUG23

32°59'N-82°23'W

# RNAV (GPS) RWY 13

LOUISVILLE MUNI (2J3)