

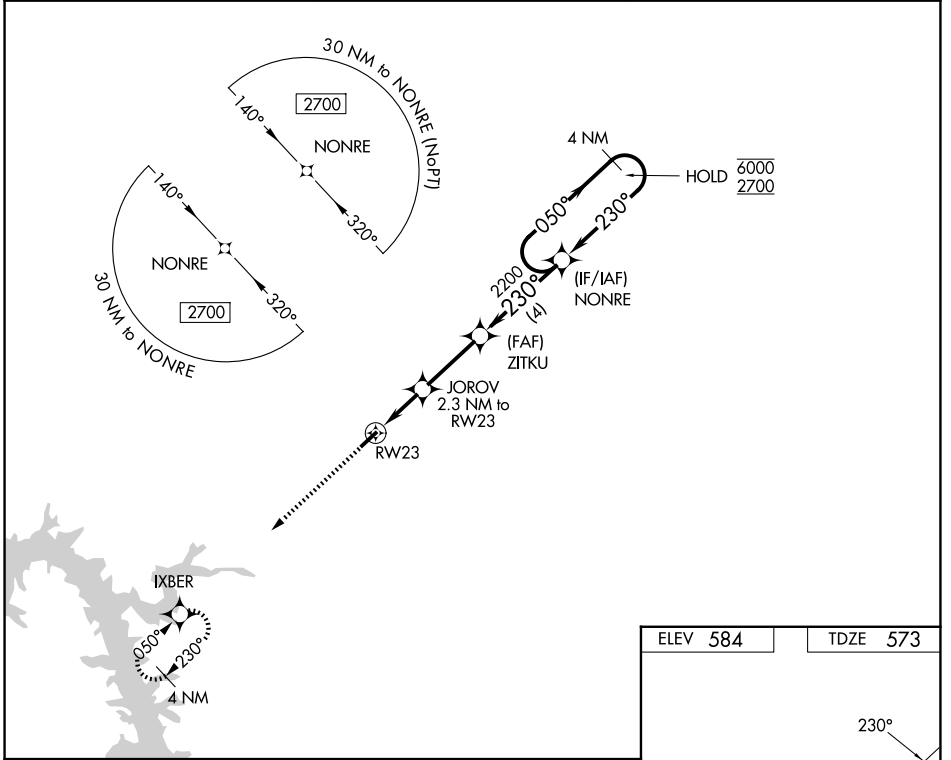
WAAS CH <b>45631</b> <b>W23A</b>	APP CRS <b>230°</b>	Rwy Ldg TDZE Apt Elev	<b>4099</b> <b>573</b> <b>584</b>
--	------------------------	-----------------------------	---

# RNAV (GPS) RWY 23

PRINCETON-CALDWELL COUNTY (2M $\emptyset$ )

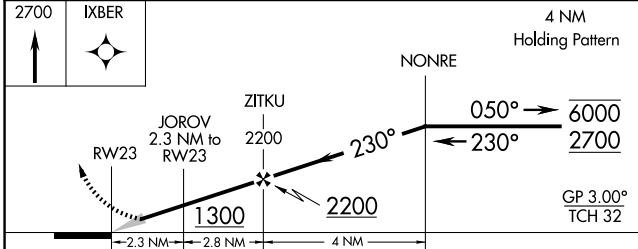
RNP APCH - GPS.	Baro-VNAV NA. Use HOP altimeter setting; when not received, use 210 altimeter setting and increase LPV DA to 908 feet, increase LNAV/VNAV DA to 1224 feet, increase all MDAs 20 feet.	MISSED APPROACH: Climb to 2700 direct IXBER and hold.
-----------------	---	--

HOP ATIS <b>125.175 308.4</b>	CAMPBELL APP CON <b>118.1 269.525</b>	UNICOM <b>122.8 (CTAF)</b> $\emptyset$
----------------------------------	--	---



SE-1, 16 APR 2026 to 14 MAY 2026

SE-1, 16 APR 2026 to 14 MAY 2026



ELEV 584	TDZE 573
----------	----------

CATEGORY	A	B	C	D
LPV DA	899-1	326 (400-1)		NA
LNAV/VNAV DA	1215-1 $\frac{7}{8}$	642 (700-1 $\frac{7}{8}$ )		NA
LNAV MDA	1120-1	547 (600-1)		NA
CIRCLING	1420-1 $\frac{1}{4}$	836 (900-1 $\frac{1}{4}$ )		NA

MIRL Rwy 5-23  $\emptyset$   
REIL Rwy 5 and 23  $\emptyset$