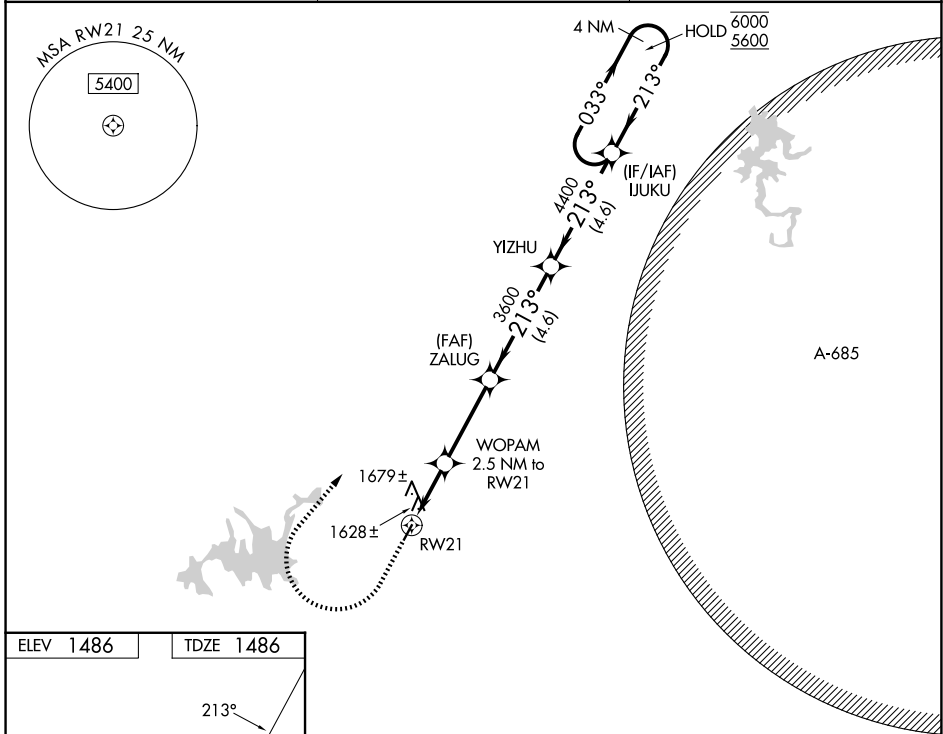


WAAS CH 86641 W21A	APP CRS 213°	Rwy Ldg TDZE 1486 Apt Elev 1486
--	------------------------	---

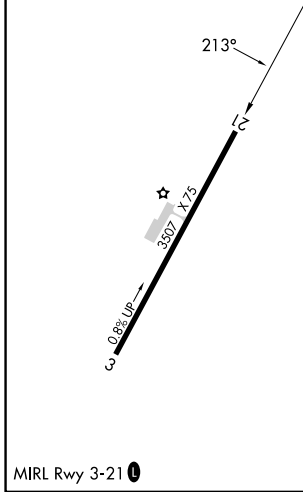
RNAV (GPS) RWY 21

GILMER COUNTY (49A)

RNP APCH - GPS.		MISSED APPROACH: Climb to 2500 then climbing right turn to 5700 direct IJUKU and hold, continue climb-in-hold to 5700.
Procedure NA at night. Rwy 21 helicopter visibility reduction below 1 SM NA.		
AWOS-3 118.075	ATLANTA CENTER 133.1 342.425	UNICOM 123.0 (CTAF)



ELEV 1486	TDZE 1486
------------------	------------------



2500	5700	IJUKU	Visual Segment - Obstacles.	IJUKU	4 NM Holding Pattern
↑	↷	✧			
RWY 21		WOPAM 2.5 NM to RWY 21	ZALUG	YIZHU	6000 5600
2400		3600	4400	213°	033°
← 2.5 NM		← 3.4 NM	← 4.6 NM	← 4.6 NM	
CATEGORY	A	B	C	D	
LP MDA	1880-1	394 (400-1)	1880-1½	394 (400-1½)	
LNAV MDA	1940-1	454 (500-1)	1940-1¾	454 (500-1¾)	
CIRCLING	1980-1 494 (500-1)	2560-1½ 1074 (1100-1½)	2560-3	1074 (1100-3)	

SE-4, 16 APR 2026 to 14 MAY 2026

SE-4, 16 APR 2026 to 14 MAY 2026