

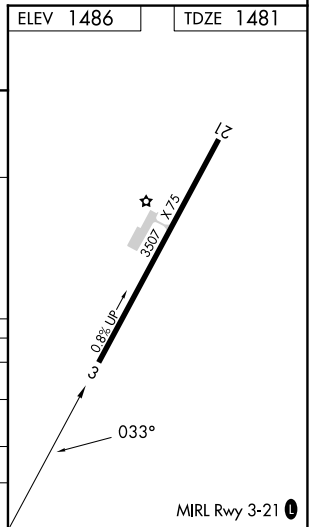
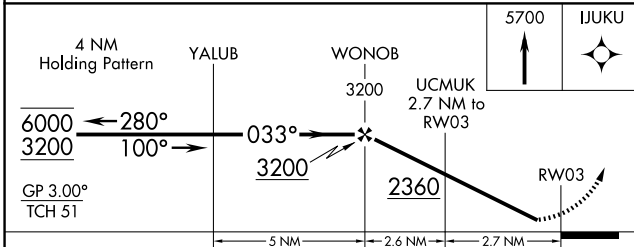
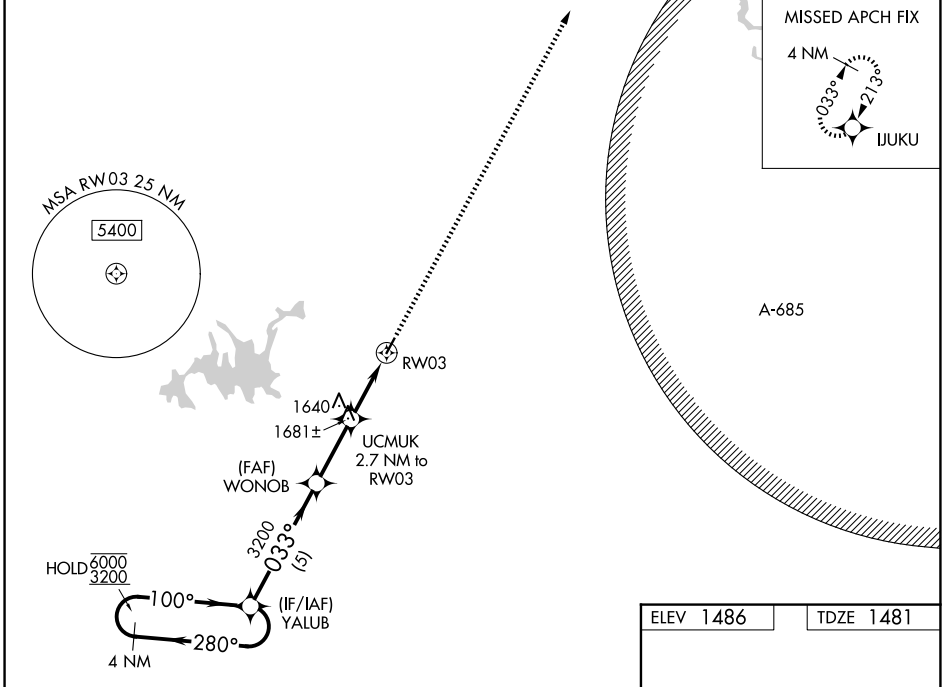
WAAS CH 45941 W03A	APP CRS 033°	Rwy Ldg TDZE 1481 Apt Elev 1486
--	------------------------	---

RNAV (GPS) RWY 3

GILMER COUNTY (49A)

RNP APCH - GPS.	MISSED APPROACH: Climb to 5700 direct IJUKU and hold, continue climb-in-hold to 5700.
<p>Procedure NA at night. Rwy 3 helicopter visibility reduction below 1 SM NA. For uncompensated Baro-VNAV systems, LNAV/VNAV NA below -17°C or above 54°C.</p>	

AWOS-3 118.075	ATLANTA CENTER 133.1 342.425	UNICOM 123.0 (CTAF)
--------------------------	--	-------------------------------



CATEGORY	A	B	C	D
LPV DA		1731-1	250 (300-1)	
LNAV/VNAV DA		1922-1 3/8	441 (500-1 3/8)	
LNAV MDA	1900-1	419 (500-1)	1900-1 1/8	419 (500-1 1/8)
CIRCLING	1980-1 494 (500-1)	2560-1 1/2 1074 (1100-1 1/2)	2560-3	1074 (1100-3)