

# RNAV (GPS) RWY 8

BLAIRSVILLE (DZJ)

APP CRS **076°**  
Rwy Ldg **4017**  
TDZE **1901**  
Apt Elev **1907**

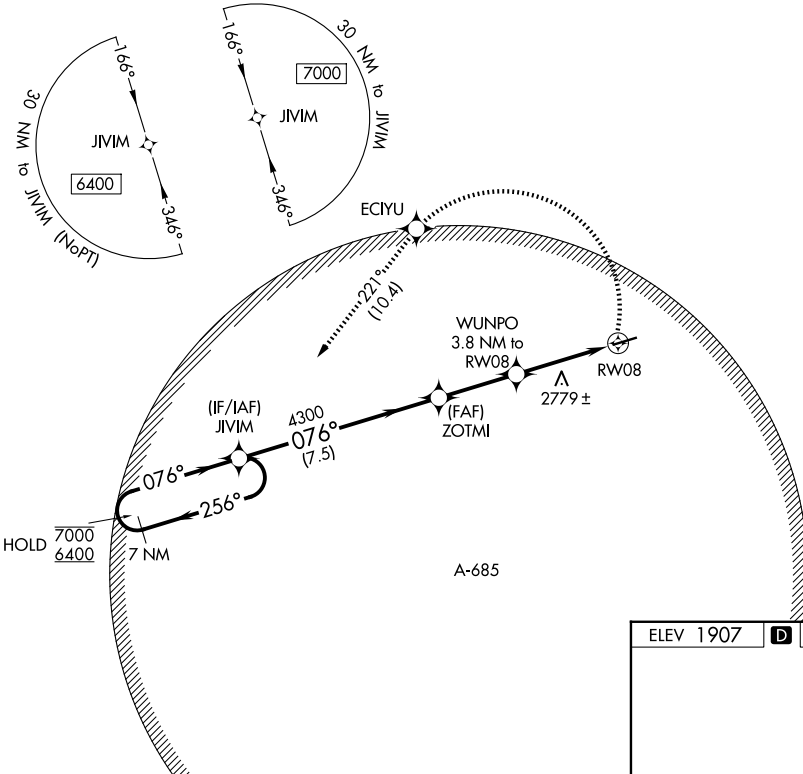
RNP APCH - GPS  
Procedure NA at night. Rwy 8 helicopter visibility reduction below 1 SM NA. When local altimeter setting not received, procedure NA. Circling NA for Cat D.

MISSED APPROACH: (Do not exceed 210K until JIVIM) Climbing left turn to 6400 direct ECIYU and on track 221° to JIVIM and hold, continue climb-in-hold to 6400.

AWOS-3PT  
**119.325**

ATLANTA CENTER  
**134.8 379.95**

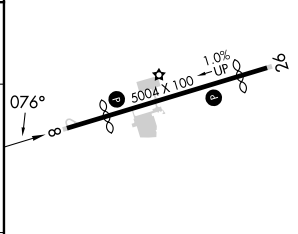
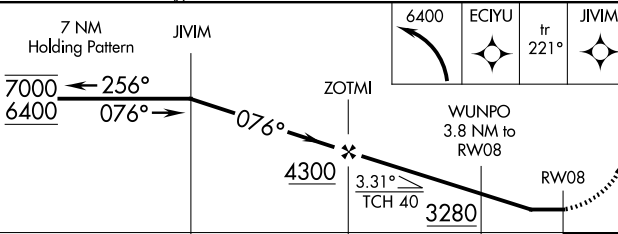
UNICOM  
**122.8 (CTAF)**



SE-4, 16 APR 2026 to 14 MAY 2026

SE-4, 16 APR 2026 to 14 MAY 2026

ELEV 1907 **D** TDZE 1901



CATEGORY	A	B	C	D
LNNAV MDA	2860-1¼ 959 (1000-1¼)	2860-1½ 959 (1000-1½)	2860-3	959 (1000-3)
CIRCLING	2860-1¼ 953 (1000-1¼)	2940-1½ 1033 (1100-1½)	3180-3 1273 (1300-3)	NA

MIRL Rwy 8-26 **I**