

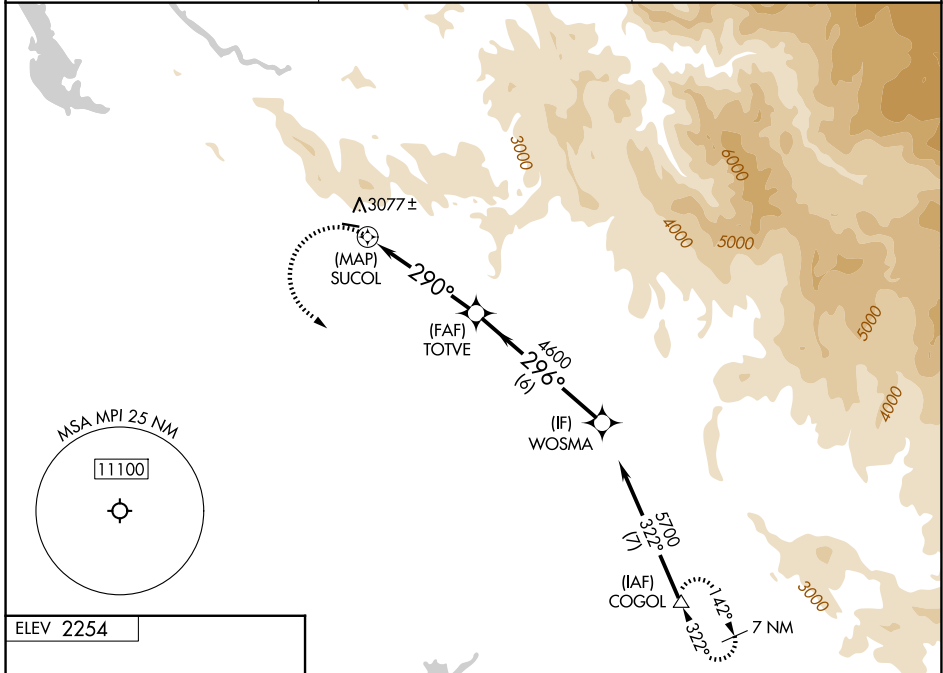
APP CRS	Rwy Ldg	N/A
290°	TDZE	N/A
	Apt Elev	2254

RNAV (GPS)-A

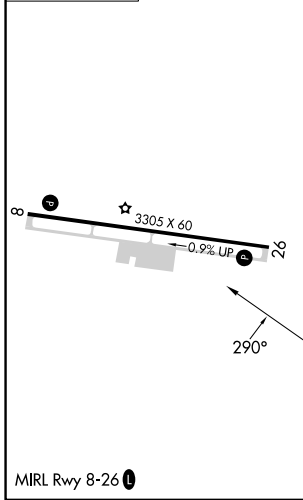
MARIPOSA-YOSEMITE (MPI)

RNP APCH - GPS.		MISSED APPROACH: Climbing left turn to 7000 direct COGOL and hold.
	Circling NA north of Rwy 8-26. When local altimeter setting not received, use MER altimeter setting and increase all MDAs 360 feet. Procedure NA at night.	

AWOS-3 135.6	OAKLAND CENTER 121.25 327.0	UNICOM 122.7 (CTAF) ①
------------------------	---------------------------------------	---------------------------------

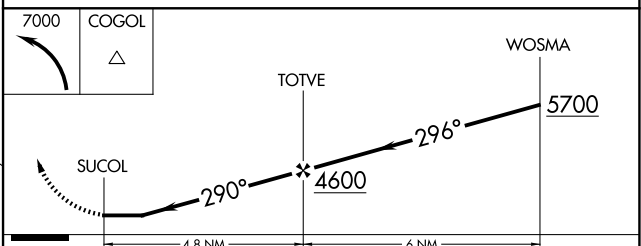


ELEV 2254



MIRL Rwy 8-26 ①

Procedure NA for arrivals at COGOL on V459 southeast bound.



CATEGORY	A	B	C	D
CIRCLING	4100-1¼ 1846 (1900-1¼)	4180-1½ 1926 (2000-1½)	NA	

SW-2, 16 APR 2026 to 14 MAY 2026

SW-2, 16 APR 2026 to 14 MAY 2026