

| | | |
|-------------|----------|-------------|
| APP CRS | Rwy Ldg | 4002 |
| 008° | TDZE | 2316 |
| | Apt Elev | 2337 |

RNAV (GPS) RWY 2

BOUNDARY COUNTY (65S)

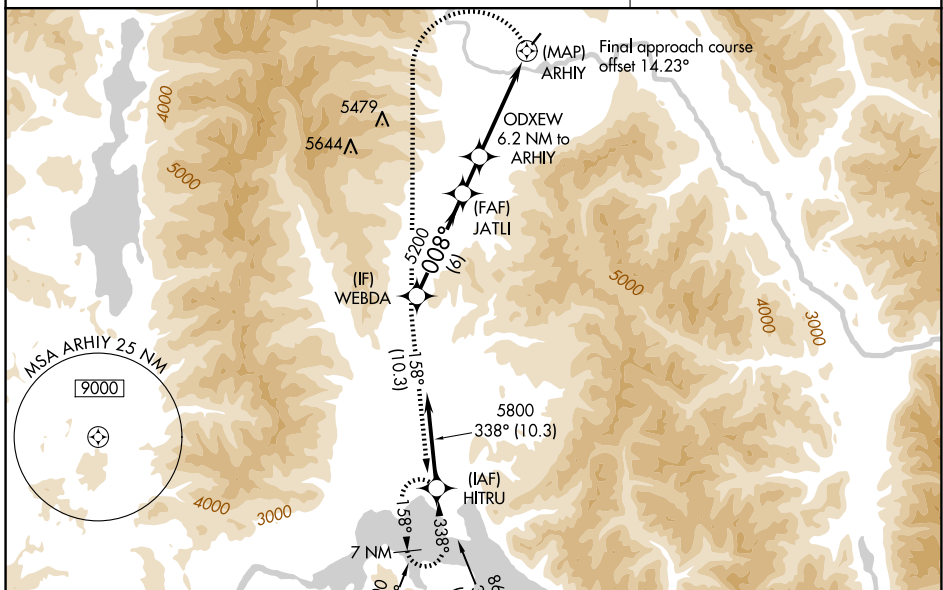
When local altimeter setting not received, procedure NA.
 ▲ NA DME/DME RNP-0.3 NA.
 ✱ -6°C Helicopter visibility reduction below ¾ SM NA.
 * Missed approach requires minimum climb of 400 feet per NM to 6600.
 # Missed approach requires minimum climb of 300 feet per NM to 6400.

MISSED APPROACH: Climbing left turn to 8600 direct WEBDA and on track 158° to HITRU, continue climb-in-hold to 8600.

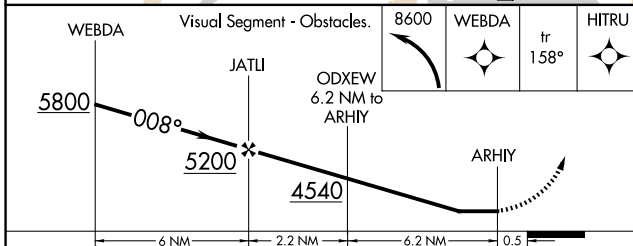
AWOS-3PT
132.575

SEATTLE CENTER
123.95 290.55

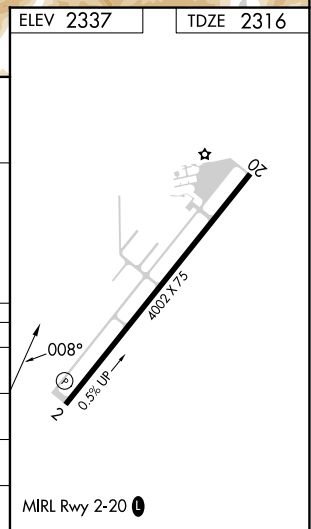
UNICOM
123.0 (CTAF) 0



| | |
|-----------|-----------|
| ELEV 2337 | TDZE 2316 |
|-----------|-----------|



| CATEGORY | A | B | C | D |
|-----------|---------------------------|---------------------------|--------|----|
| LNAV MDA* | 3260-1¼ 944 (1000-1¼) | 3260-2¾ 944 (1000-2¾) | 3880-3 | NA |
| LNAV MDA# | 3880-1¼ 1564 (1600-1¼) | 3880-1½ 1564 (1600-1½) | 3880-3 | NA |
| LNAV MDA | 4480-1¼ 2164 (2200-1¼) | 4480-1½ 2164 (2200-1½) | 4480-3 | NA |
| CIRCLING | 4480-1¼ 2143 (2200-1¼) | 4480-1½ 2143 (2200-1½) | 4480-3 | NA |



NW-1, 16 APR 2026 to 14 MAY 2026

NW-1, 16 APR 2026 to 14 MAY 2026