

(HANIM2.HANIM) 22363

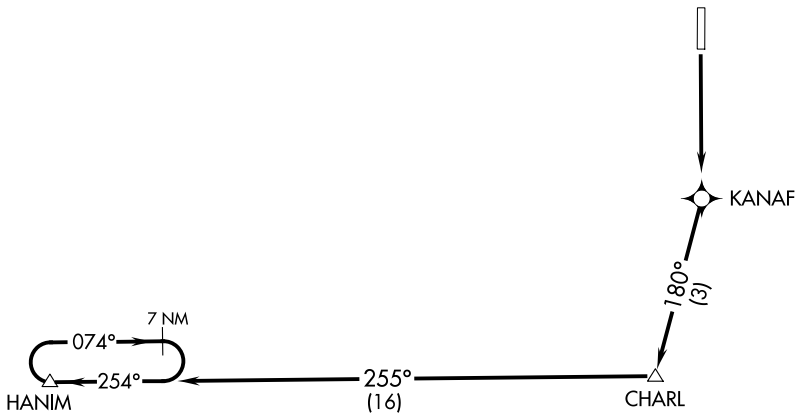
# HANIM TWO DEPARTURE (RNAV)

AL-9978 (FAA)

RONAN (7S)  
RONAN, MONTANA

SALT LAKE CITY CENTER  
127.075 244.875  
CTAF  
122.8

**TOP ALTITUDE:  
13000**



NOTE: RNAV 1.

NOTE: GPS required.

### TAKEOFF MINIMUMS

Rwy 16: Standard.

Rwy 34: NA. See RONAN DEPARTURE.

NOTE: Chart not to scale



### DEPARTURE ROUTE DESCRIPTION

TAKEOFF RUNWAY 16: Climb to 13000 direct KANAF and via track 180° to CHARL and via track 255° to HANIM and hold, continue climb-in-hold to 13000 before proceeding on course.

# HANIM TWO DEPARTURE (RNAV)

(HANIM2.HANIM) 21JUL16

RONAN, MONTANA  
RONAN (7S)

NW-1, 16 APR 2026 to 14 MAY 2026

NW-1, 16 APR 2026 to 14 MAY 2026