

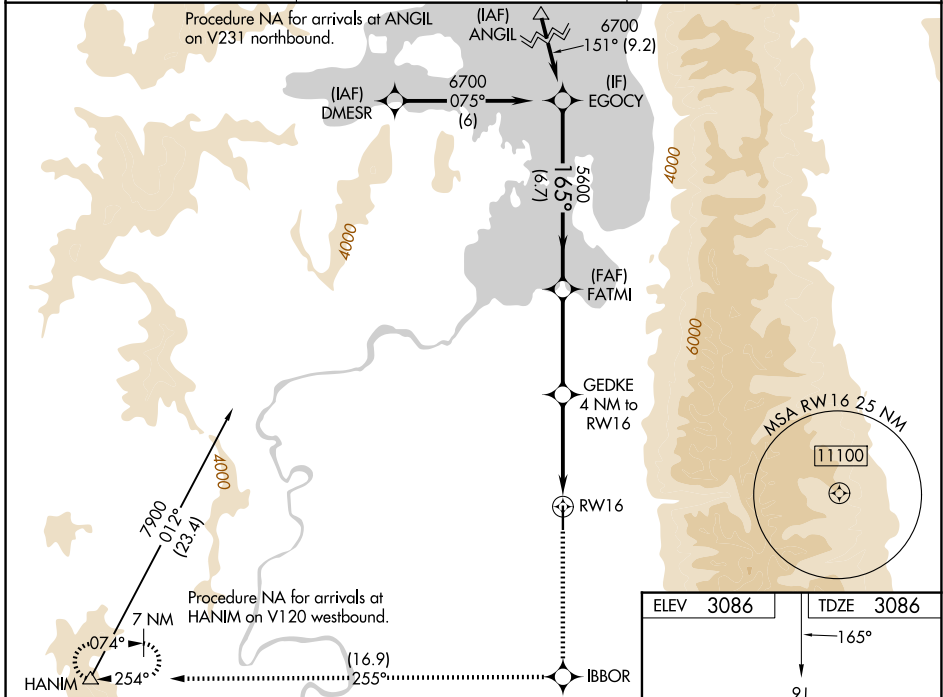
WAAS CH 45814 W16A	APP CRS 165°	Rwy Ldg TDZE Apt Elev	4798 3086 3086
--	------------------------	-----------------------------	---

RNAV (GPS) RWY 16

RONAN (7S)

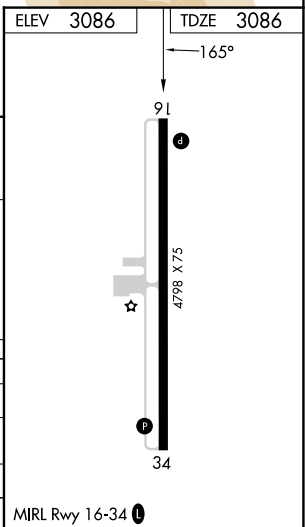
RNP APCH.	<p>NA Baro-VNAV NA when using Missoula altimeter setting. For uncompensated Baro-VNAV systems, procedure NA below -21°C or above 54°C. Circling NA east of Rwy 16-34. When local altimeter setting not received, use Missoula altimeter setting: increase LPV DA to 3550 and LNAV/VNAV DA to 3639 and all visibilities ¼ SM; increase all MDAs 120 feet and LNAV Cat B and Circling Cats A and B visibility ¼ SM.</p>	<p>MISSED APPROACH: Climb to 13000 direct IBBOR and on track 255° to HANIM and hold, continue climb-in-hold to 13000.</p>
-----------	--	--

AWOS-3 119.925	SALT LAKE CITY CENTER 127.075 244.875	AUNICOM 122.8 (CTAF)
--------------------------	---	--------------------------------



VGSI and RNAV glidepath not coincident (VGSI Angle 3.00/TCH 21).

EGOCY	FATMI	IBBOR	HANIM
6700	5600	13000	tr 255°
GP 3.00° TCH 40		GEDKE 4 NM to RWY 16	*LNAV only
6.7 NM		3.8 NM	4 NM
A		B	C
LPV DA	3443-1¼ 357 (400-1¼)		NA
LNAV/VNAV DA	3532-1¾ 446 (500-1¾)		NA
LNAV MDA	3800-1 714 (800-1)		NA
CIRCLING	3800-1 714 (800-1)		NA



NW-1, 16 APR 2026 to 14 MAY 2026

NW-1, 16 APR 2026 to 14 MAY 2026