

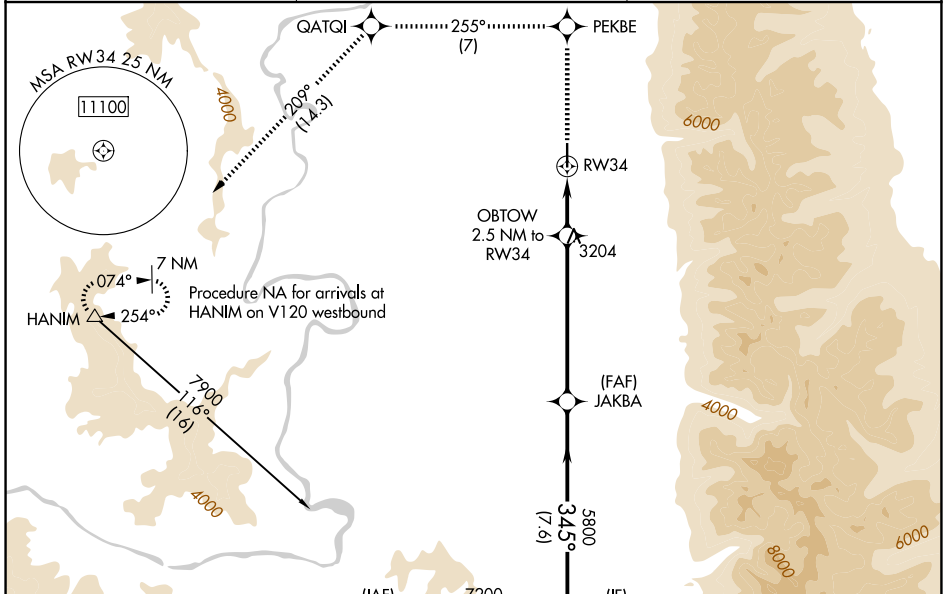
WAAS CH 86614 W34A	APP CRS 345°	Rwy Ldg TDZE Apt Elev	4798 3081 3086
--	------------------------	-----------------------------	---

RNAV (GPS) RWY 34

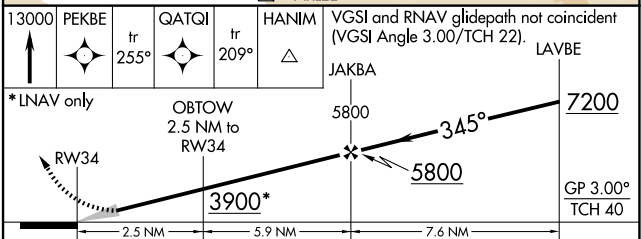
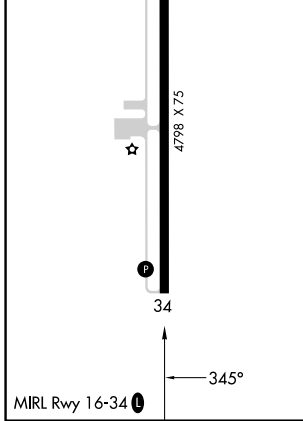
RONAN (7S)

RNP APCH.	MISSED APPROACH: Climb to 13000 direct PEKBE and on track 255° to QATQI and on track 209° to HANIM and hold, continue climb-in-hold to 13000.
<p>NA Baro-VNAV NA when using Missoula altimeter setting. For uncompensated Baro-VNAV systems, procedure NA below -21°C or above 54°C. Circling NA east of Rwy 16-34. When local altimeter setting not received, use Missoula altimeter setting and increase LPV DA to 3545 and all visibilities 3/8 SM, LNAV/VNAV DA to 3545 and all visibilities 3/8 SM; and increase all MDAs 120 feet.</p>	

AWOS-3 119.925	SALT LAKE CITY CENTER 127.075 244.875	AUNICOM 122.8 (CTAF)
--------------------------	---	--------------------------------



ELEV 3086	TDZE 3081
-----------	-----------



CATEGORY	A	B	C	D
LPV DA	3438-1	357 (400-1)	NA	
LNAV/VNAV DA	3438-1¼	357 (400-1¼)	NA	
LNAV MDA	3520-1	439 (500-1)	NA	
CIRCLING	3560-1	474 (500-1)	NA	

NW-1, 16 APR 2026 to 14 MAY 2026

NW-1, 16 APR 2026 to 14 MAY 2026