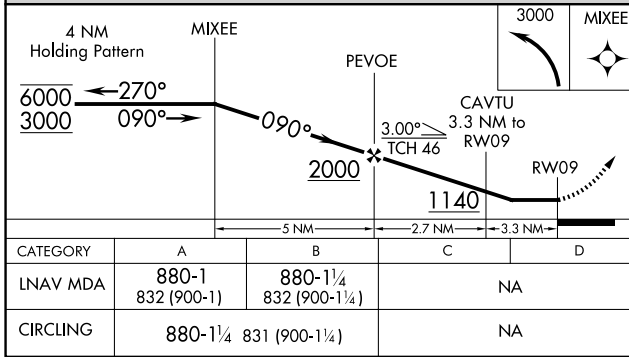
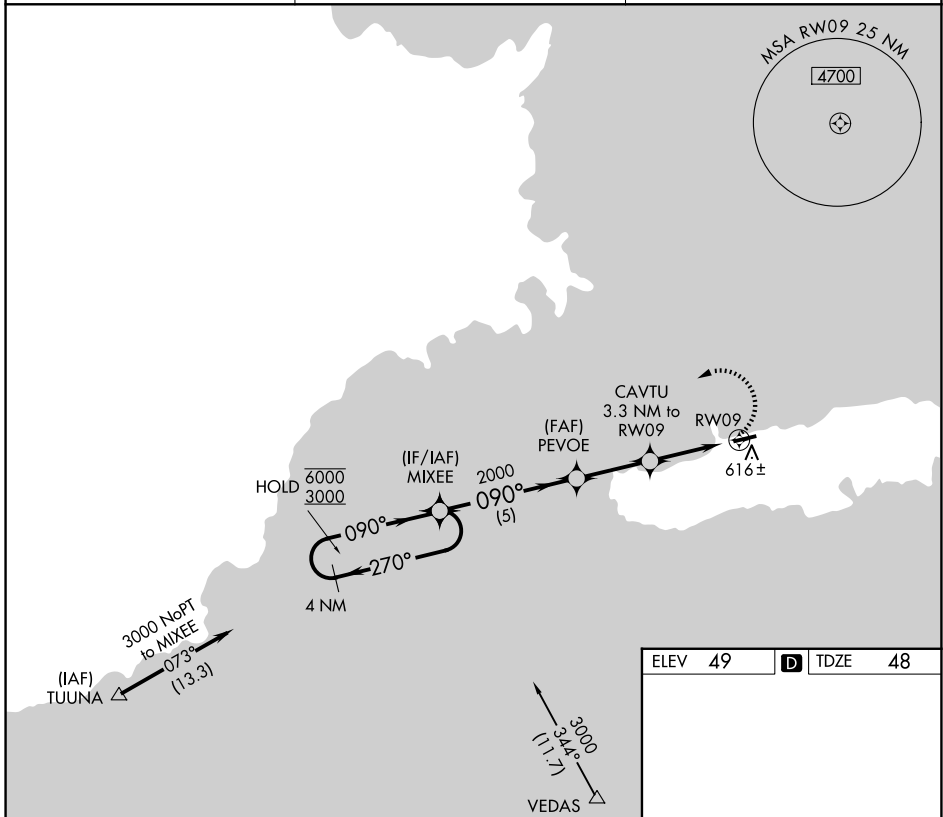


APP CRS	Rwy Ldg	4094
090°	TDZE	48
	Apt Elev	49

RNAV (GPS) RWY 9

ANTONIO RIVERA RODRIGUEZ (VQS)(TJVQ)

RNP APCH-GPS.		MISSED APPROACH: Climbing left turn to 3000 direct MIXEE and hold.
⚠ NA Circling NA south of Rwy 9-27. Rwy 9 helicopter visibility reduction below 1 SM NA. Procedure NA at night. Use SJU/TJSJ altimeter setting.		
SJU/TJSJ ASOS 125.8	SAN JUAN CERAP APP CON 128.65 279.6	UNICOM 123.0 (CTAF)



ELEV	49	D	TDZE	48
MIRL Rwy 9-27 4294 X 75 -0.68% UP				

SE-3, 16 APR 2026 to 14 MAY 2026

SE-3, 16 APR 2026 to 14 MAY 2026