

(CHOTT1.CHOTT) 24305

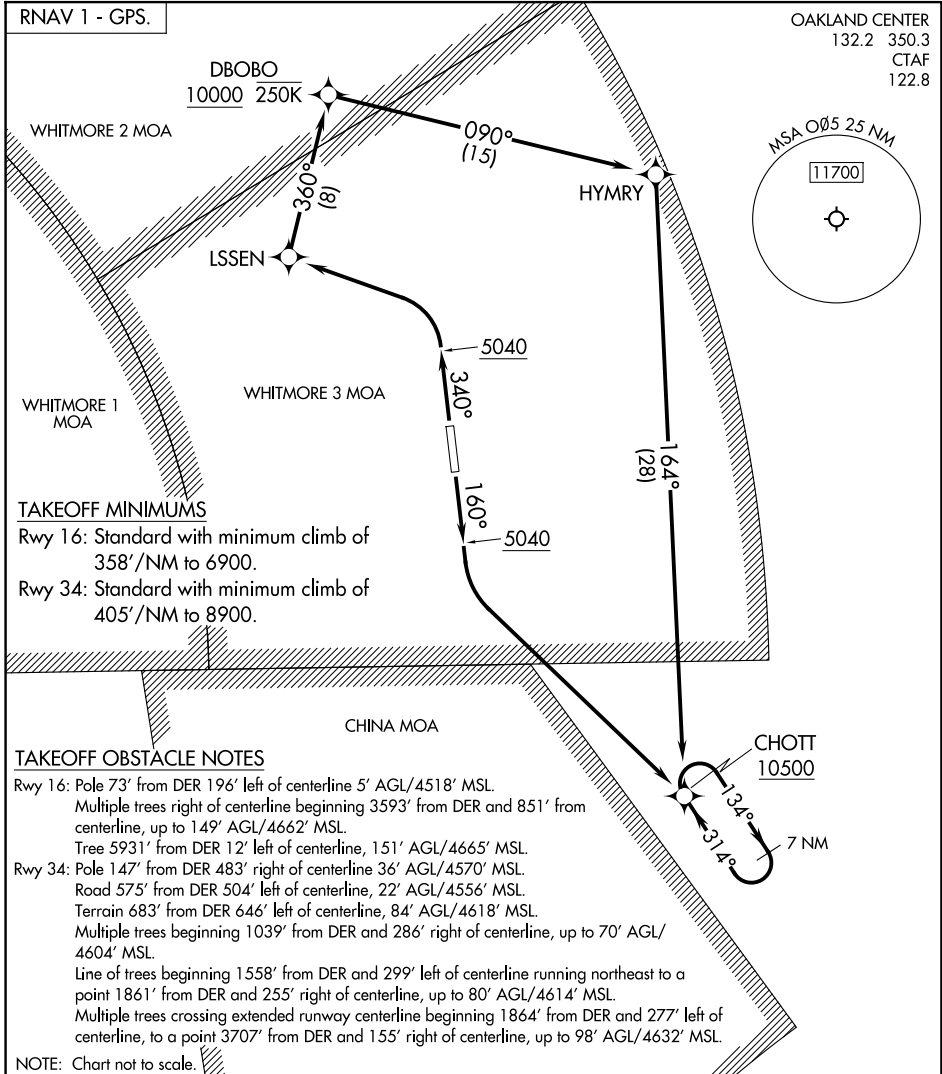
AL-10031 (FAA-O)

ROGERS FLD (005)
CHESTER, CALIFORNIA

CHOTT ONE DEPARTURE (OBSTACLE) (RNAV)

OAKLAND CENTER
132.2 350.3
CTAF
122.8

RNAV 1 - GPS.



TAKEOFF MINIMUMS

Rwy 16: Standard with minimum climb of 358'/NM to 6900.

Rwy 34: Standard with minimum climb of 405'/NM to 8900.

TAKEOFF OBSTACLE NOTES

- Rwy 16: Pole 73' from DER 196' left of centerline 5' AGL/4518' MSL.
Multiple trees right of centerline beginning 3593' from DER and 851' from centerline, up to 149' AGL/4662' MSL.
Tree 5931' from DER 12' left of centerline, 151' AGL/4665' MSL.
- Rwy 34: Pole 147' from DER 483' right of centerline 36' AGL/4570' MSL.
Road 575' from DER 504' left of centerline, 22' AGL/4556' MSL.
Terrain 683' from DER 646' left of centerline, 84' AGL/4618' MSL.
Multiple trees beginning 1039' from DER and 286' right of centerline, up to 70' AGL/4604' MSL.
Line of trees beginning 1558' from DER and 299' left of centerline running northeast to a point 1861' from DER and 255' right of centerline, up to 80' AGL/4614' MSL.
Multiple trees crossing extended runway centerline beginning 1864' from DER and 277' left of centerline, to a point 3707' from DER and 155' right of centerline, up to 98' AGL/4632' MSL.

NOTE: Chart not to scale.

DEPARTURE ROUTE DESCRIPTION

TAKEOFF RUNWAY 16: Climb on heading 160° to 5040, then climbing left turn to 10500 direct CHOTT, thence. . . .

TAKEOFF RUNWAY 34: Climb on heading 340° to 5040, then climbing left turn to 10500 direct LSSN, then on depicted route to CHOTT, thence. . . .

. . . .continue climb in CHOTT holding pattern to cross CHOTT at or above 10500 before proceeding on course.

CHOTT ONE DEPARTURE (OBSTACLE) (RNAV)

(CHOTT1.CHOTT) 31OCT24

CHESTER, CALIFORNIA
ROGERS FLD (005)

SW-2, 16 APR 2026 to 14 MAY 2026

SW-2, 16 APR 2026 to 14 MAY 2026