

APP CRS	Rwy Ldg	<b>3299</b>
<b>083°</b>	TDZE	<b>964</b>
	Apt Elev	<b>967</b>

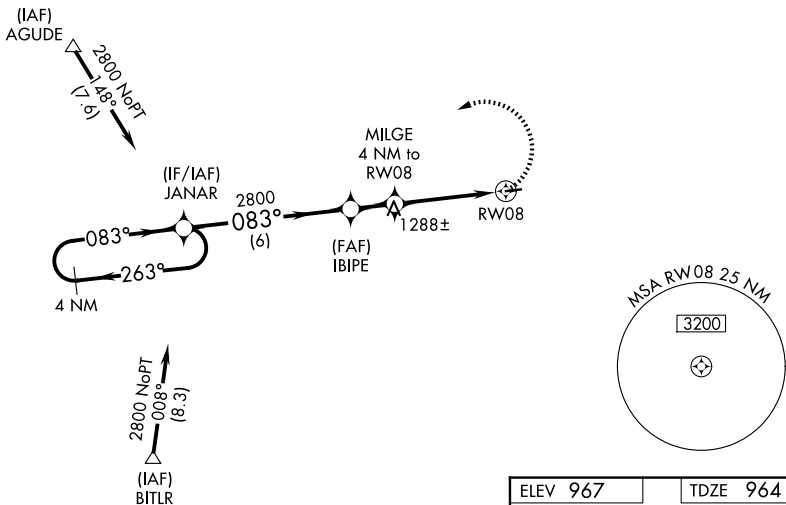
# RNAV (GPS) RWY 8

BOYCEVILLE MUNI (3T3)

RNP APCH.	MISSED APPROACH: Climbing left turn to 2800 direct JANAR and hold.
Use New Richmond Rgnl altimeter setting. When VGSI inop, procedure NA at night. Helicopter visibility reduction below 1 SM NA.	

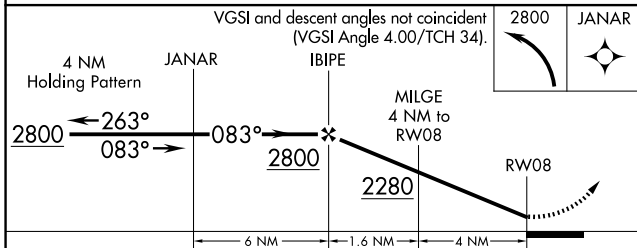
RNH AWOS-3 <b>120.0</b>	MINNEAPOLIS CENTER <b>125.3 335.6</b>	UNICOM <b>122.8 (CTAF) 0</b>
----------------------------	--	---------------------------------

Procedure NA for arrivals at AGUDE via V78 westbound.



ELEV 967	TDZE 964
----------	----------

MIRL Rwy 8-26 0  
REIL Rwy 26 0



CATEGORY	A	B	C	D
LNAV MDA	1580-1	616 (700-1)	1580-1¾ 616 (700-1¾)	NA

EC-3, 16 APR 2026 to 14 MAY 2026

EC-3, 16 APR 2026 to 14 MAY 2026