

APP CRS	Rwy Ldg	<b>5500</b>
<b>003°</b>	TDZE	<b>696</b>
	Apt Elev	<b>718</b>

# RNAV (GPS) RWY 2

BILL PUGH FLD (M22)

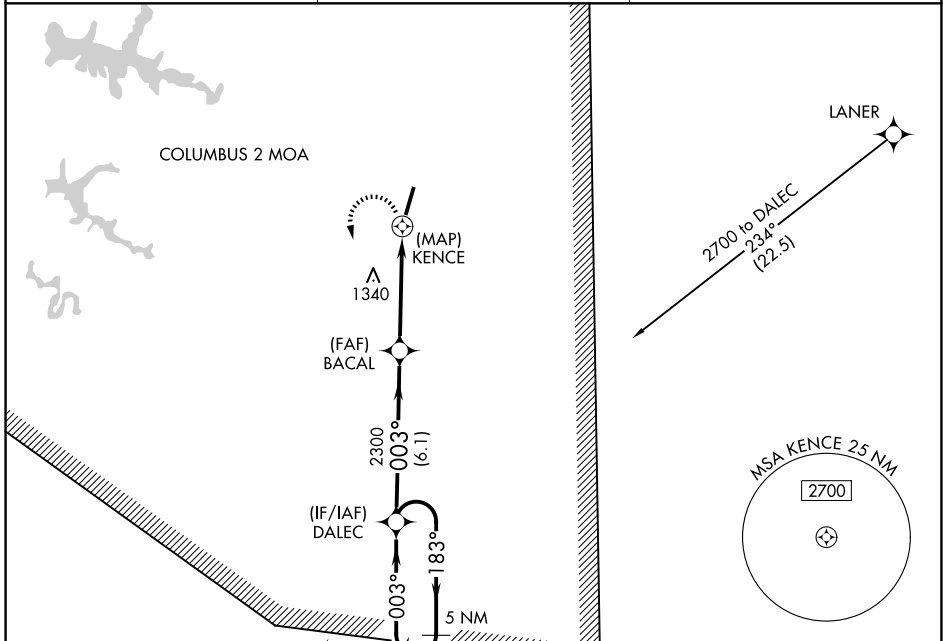
RNP APCH-GPS.

▼ Procedure NA at night. Rwy 2 helicopter visibility reduction below 1 SM NA. Use Muscle Shoals altimeter setting; when not received, use Decatur altimeter setting and increase all MDA 60 feet.

▲ NA

MISSED APPROACH: Climbing left turn to 2700 direct DALEC and hold.

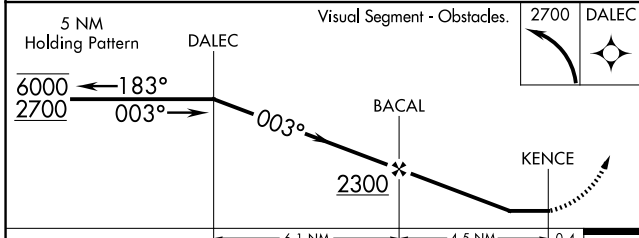
MSL ASOS <b>119.425</b>	MEMPHIS CENTER <b>120.8 307.0</b>	UNICOM <b>122.8 (CTAF) 0</b>
----------------------------	--------------------------------------	---------------------------------



SE-4, 16 APR 2026 to 14 MAY 2026

SE-4, 16 APR 2026 to 14 MAY 2026

ELEV 718	<b>D</b> TDZE 696
----------	-------------------



CATEGORY	A	B	C	D
LNVA MDA	1660-1¼ 964 (1000-1¼)	1660-1½ 964 (1000-1½)	1660-3	964 (1000-3)
CIRCLING	1660-1¼ 942 (1000-1¼)	1660-1½ 942 (1000-1½)	1720-3	1002 (1100-3)

