

APP CRS	Rwy Idg	5006
008°	TDZE	230
	Apt Elev	237

RNAV (GPS) RWY 1

NORTH PICKENS (3M8)

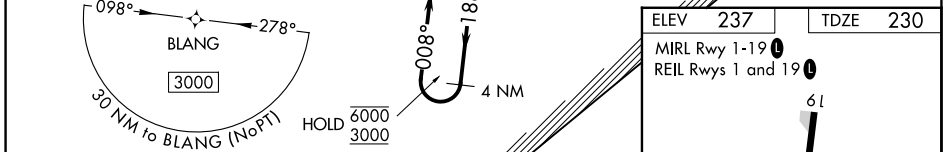
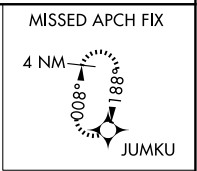
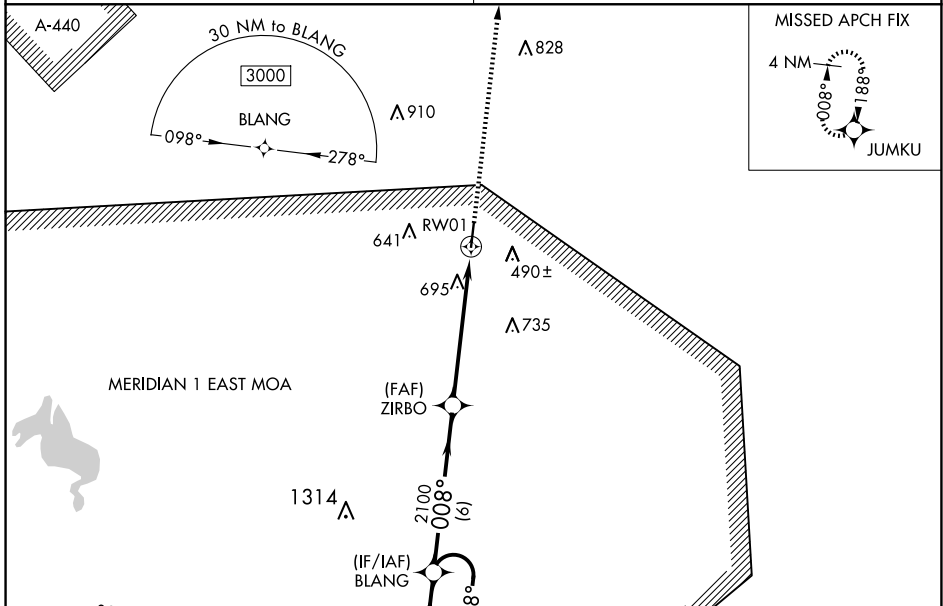
RNP APCH - GPS.

▼ Procedure NA at night. Rwy 1 helicopter visibility reduction below 1 SM NA.
 ▲ NA Obtain local altimeter setting on CTAF; when not received, use Tuscaloosa altimeter setting; increase all MDAs 80 feet and LNAV visibility Cat B ¼ SM and Cats C and D ½ SM; increase Circling visibility all Cats ½ SM.

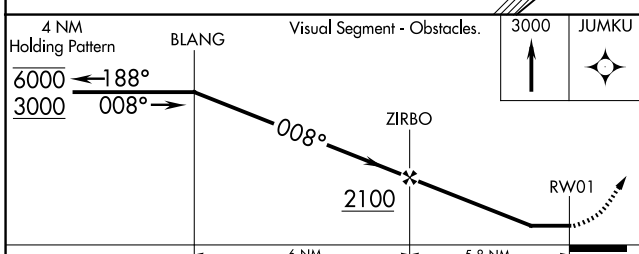
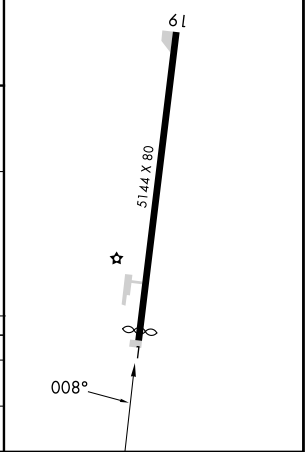
MISSED APPROACH: Climb to 3000 direct JUMKU and hold.

COLUMBUS APP CON ★
135.6 323.275

CTAF
122.9



ELEV	237	TDZE	230
MIRL Rwy 1-19		REIL Rwy 1 and 19	



CATEGORY	A	B	C	D
LNAV MDA	960-1	730 (800-1)	960-2	730 (800-2)
CIRCLING	1000-1	763 (800-1)	1000-2¼ 763 (800-2¼)	1040-2½ 803 (900-2½)

SE-4, 16 APR 2026 to 14 MAY 2026

SE-4, 16 APR 2026 to 14 MAY 2026