

WAAS CH 72729 W19A	APP CRS 188°	Rwy Idg TDZE Apt Elev	5144 237 237
---------------------------------	------------------------	-----------------------------	---

RNAV (GPS) RWY 19

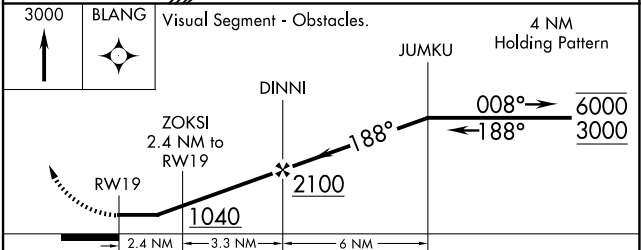
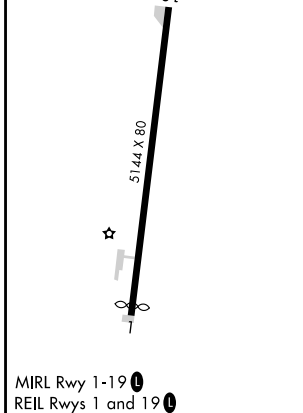
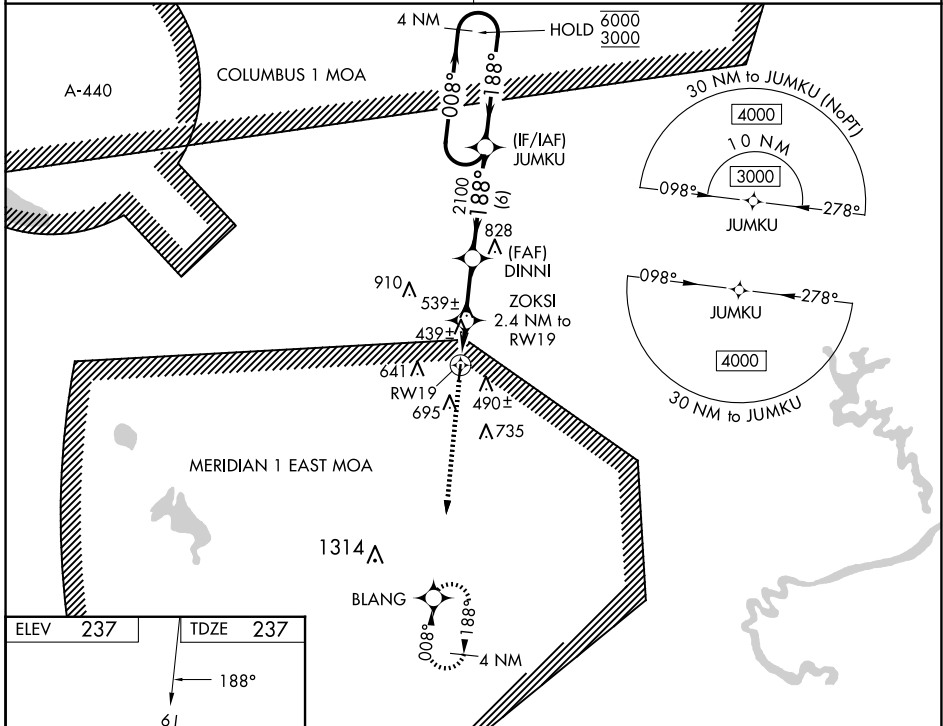
NORTH PICKENS (3M8)

RNP APCH.

Procedure NA at night. Rwy 19 helicopter visibility reduction below 1 SM NA.
 Obtain local altimeter setting on CTAF; when not received, use Tuscaloosa altimeter setting; increase all MDAs 80 feet; increase LP and LNAV Cat C/D visibility ¼ SM; increase Circling visibility all Cats ½ SM.

MISSED APPROACH: Climb to 3000 direct BLANG and hold.

COLUMBUS APP CON ★ 135.6 323.275	CTAF 122.9
--	----------------------



CATEGORY	A	B	C	D
LP MDA	700-1	463 (500-1)	700-1½	463 (500-1½)
LNAV MDA	800-1	563 (600-1)	800-1½	563 (600-1½)
CIRCLING	1000-1	763 (800-1)	1000-2¼ 763 (800-2¼)	1040-2½ 803 (900-2½)

REFORM, ALABAMA
Amdt 1C 16JUN22

33°23'N-88°00'W

RNAV (GPS) RWY 19

NORTH PICKENS (3M8)

SE-4, 16 APR 2026 to 14 MAY 2026

SE-4, 16 APR 2026 to 14 MAY 2026

MIRL Rwy 1-19
REL Rws 1 and 19