

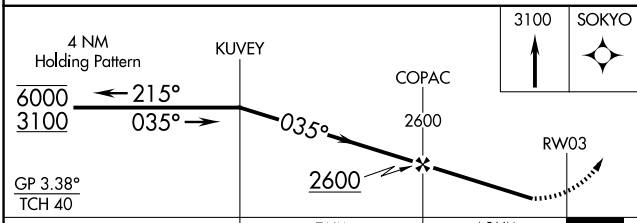
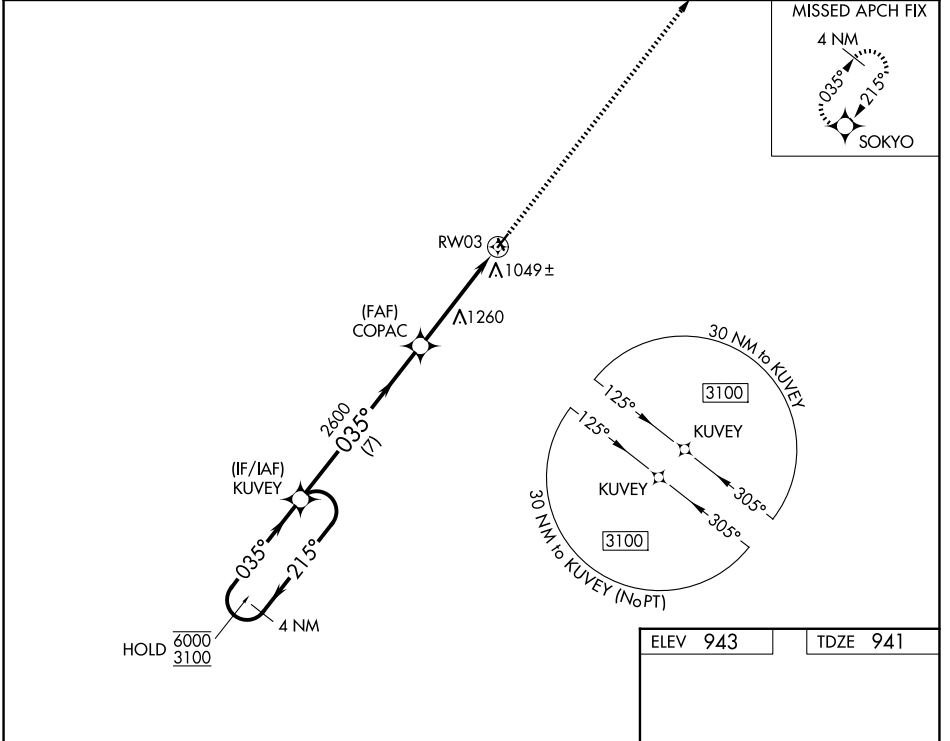
WAAS CH 49134 W03A	APP CRS 035°	Rwy Ldg 3398 TDZE 941 Apt Elev 943
--	------------------------	---

RNAV (GPS) RWY 3

MIAMI COUNTY (K81)

RNP APCH - GPS.		MISSED APPROACH: Climb to 3100 direct SOKYO and hold.
<p>▼ Baro-VNAV NA. Use New Century Aircenter altimeter setting; when not received, use Johnson County Exec altimeter setting and increase all DA 8 feet and all MDA 20 feet. Rwy 3 helicopter visibility reduction below 3/4 SM NA. Circling NA to Rwys 15 and 33.</p> <p>▲ NA</p>		

ID ASOS 135.325	KANSAS CITY APP CON 118.9 251.075	UNICOM 122.8 (CTAF) 0
---------------------------	---	---------------------------------



ELEV 943	TDZE 941
----------	----------

Diagram of RWY 3 showing a length of 3398 x 66 feet, a taxiway of 1240 x 60 feet, and a 0.85° up-slope. The MDA is 1640-1 and the REIL covers Rws 3 and 21.

MIRL Rwy 3-21
REIL Rws 3 and 21

CATEGORY	A	B	C	D
LPV DA	1284-1	343 (400-1)		NA
LNNAV/VNAV DA	1274-1	333 (400-1)		NA
LNNAV MDA	1640-1	699 (700-1)		NA
CIRCLING	1640-1	697 (700-1)		NA

NC-2, 16 APR 2026 to 14 MAY 2026

NC-2, 16 APR 2026 to 14 MAY 2026