

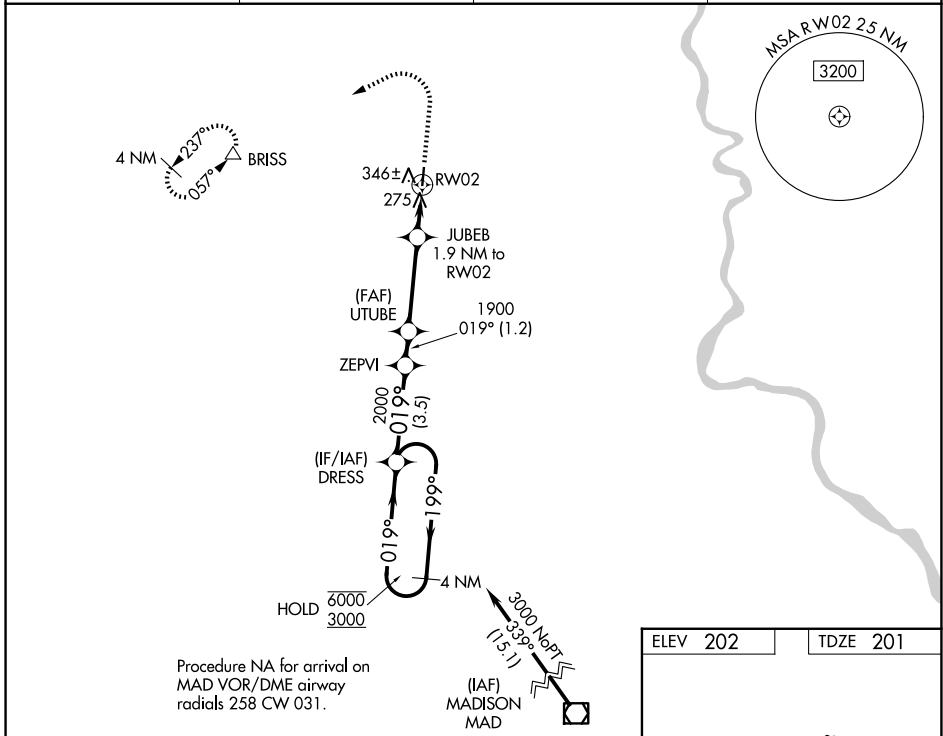
WAAS CH 65737 W02A	APP CRS 019°	Rwy Ldg TDZE Apt Elev	3666 201 202
--	------------------------	-----------------------------	---

RNAV (GPS) RWY 2

ROBERTSON FLD (4B8)

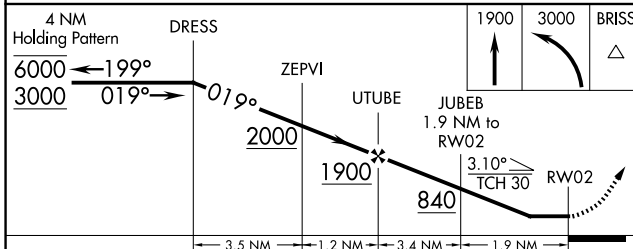
RNP APCH - GPS.		MISSED APPROACH: Climb to 1900 then climbing left turn to 3000 direct BRISS and hold.	
<p>▼ Rwy 2 helicopter visibility reduction below 1 SM NA. ▲ Circling NA east of Rwy 2-20. Circling Rwy 20 NA at night.</p>			

AWOS-3PT 119.175	BRADLEY APP CON 123.95 290.55	CLNC DEL 134.5	UNICOM 122.8 (CTAF)
----------------------------	---	--------------------------	-------------------------------

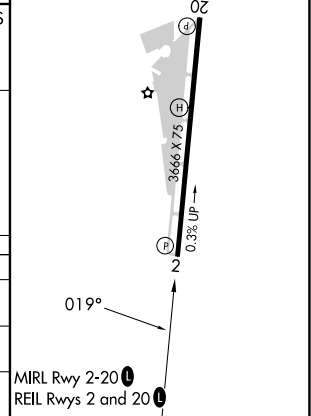


Procedure NA for arrival on MAD VOR/DME airway radials 258 CW 031.

ELEV 202	TDZE 201
----------	----------



CATEGORY	A	B	C	D
LP MDA	540-1 339 (400-1)			NA
LNAV MDA	640-1	439 (500-1)	640-1¼ 439 (500-1¼)	NA
CIRCLING	840-1	638 (700-1)	960-2¼ 758 (800-2¼)	NA



NE-1, 16 APR 2026 to 14 MAY 2026

NE-1, 16 APR 2026 to 14 MAY 2026