

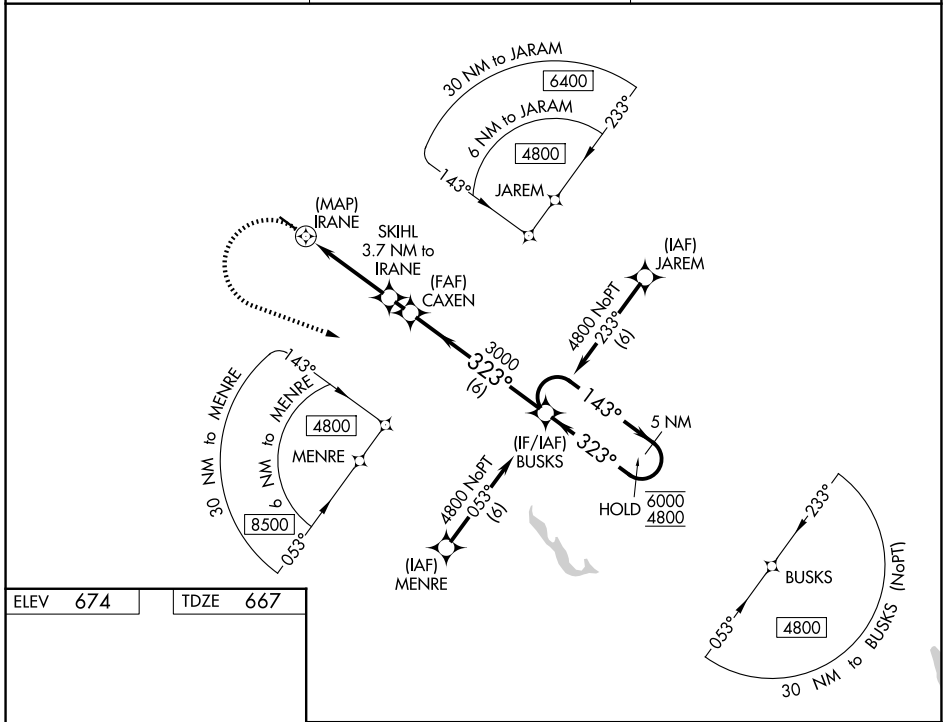
APP CRS 323°	Rwy Ldg TDZE Apt Elev	3818 667 674
------------------------	-----------------------------	---

RNAV (GPS) Z RWY 32

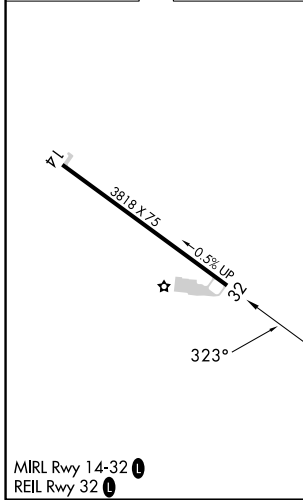
BETHEL RGNL (ØB1)

RNP APCH - GPS.		<p>MISSED APPROACH: Climbing left turn to 4800 direct BUSKS and hold, continue climb-in-hold to 4800.</p>
<p>▼ Rwy 32 helicopter visibility reduction below ¾ SM NA. Circling Rwy 14 NA at night. VDP NA when using AUG altimeter setting. When local altimeter setting not received, use AUG altimeter setting and increase all MDAs 160 feet. Caution any go-around after passing IRANE, may not provide standard obstacle clearance.</p> <p>▲ NA</p> <p>❄ -22°C</p>		

AWOS-AV 119.075	PORTLAND APP CON ★ 125.5 269.35	CTAF 122.9 0
---------------------------	---	------------------------



ELEV 674	TDZE 667
----------	----------



4800	BUSKS	5 NM Holding Pattern		
IRANE	SKIHL 3.7 NM to IRANE	CAXEN		
1.8 NM to IRANE	1.9 NM	0.9 NM		
2580	3000	323°		
143°	143°	6000		
323°	323°	4800		
0.5	1.8 NM	1.9 NM	0.9 NM	6 NM
CATEGORY	A	B	C	D
LNAV MDA	1740-1½	1073 (1100-1½)	NA	
CIRCLING	1740-1½	2340-1½	NA	
	1066 (1100-1½)	1666 (1700-1½)		

NE-1, 16 APR 2026 to 14 MAY 2026

NE-1, 16 APR 2026 to 14 MAY 2026