

APP CRS Rwy Idg **3800**
 074° TDZE **624**
 Apt Elev **624**

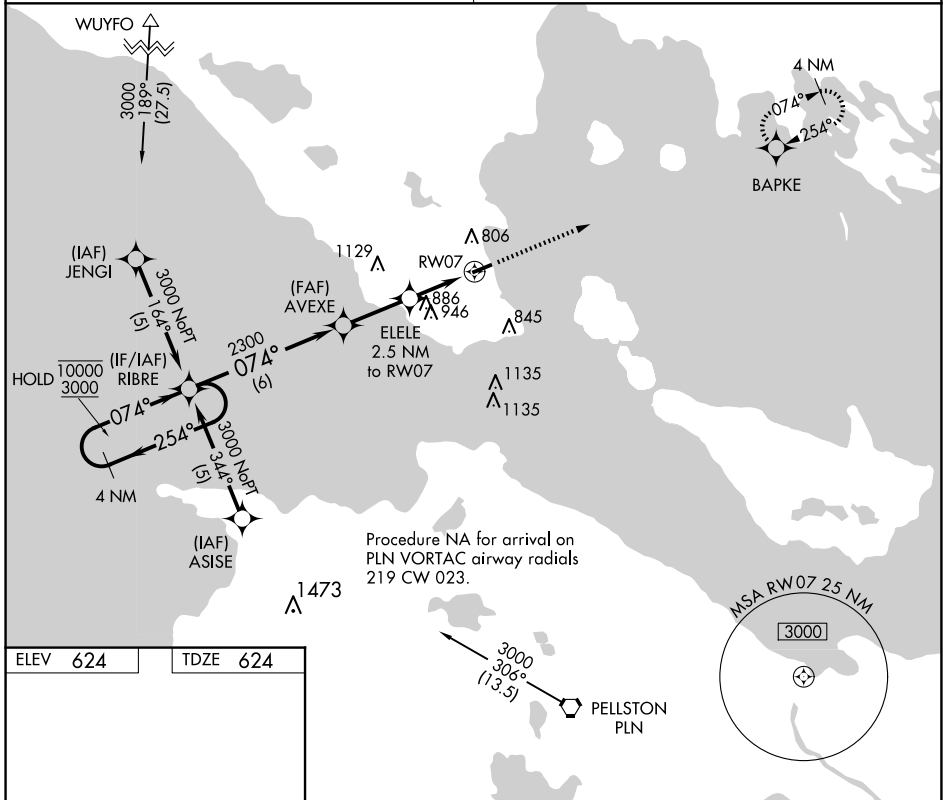
RNAV (GPS) RWY 7
 MACKINAC COUNTY (83D)

RNP APCH.
 ▼ Straight-in Rwy 07 NA at night, Circling Rwy 07 NA at night.
 ▲ NA Rwy 07 helicopter visibility reduction below 1 SM NA.
 Circling NA at night south of Rwy 07-25.

MISSED APPROACH: Climb to 3000 direct BAPKE and hold.

MINNEAPOLIS CENTER
134.6 354.05

UNICOM
122.7 (CTAF) 0



ELEV 624	TDZE 624
----------	----------

MIRL Rwy 7-25
 REIL Rws 7 and 25

4 NM Holding Pattern	RIBRE	Visual Segment - Obstacles.	3000	BAPKE
10000 ← 254°	→ 074°	AVEXE	ELELE 2.5 NM to RWY 07	RWY 07
3000	2300	1460		
	6 NM	2.6 NM	2.5 NM	
CATEGORY	A	B	C	D
LNAV MDA	1200-1	576 (600-1)	1200-1½ 576 (600-1½)	NA
CIRCLING	1260-1	636 (700-1)	1300-2 676 (700-2)	NA

EC-1, 16 APR 2026 to 14 MAY 2026

EC-1, 16 APR 2026 to 14 MAY 2026