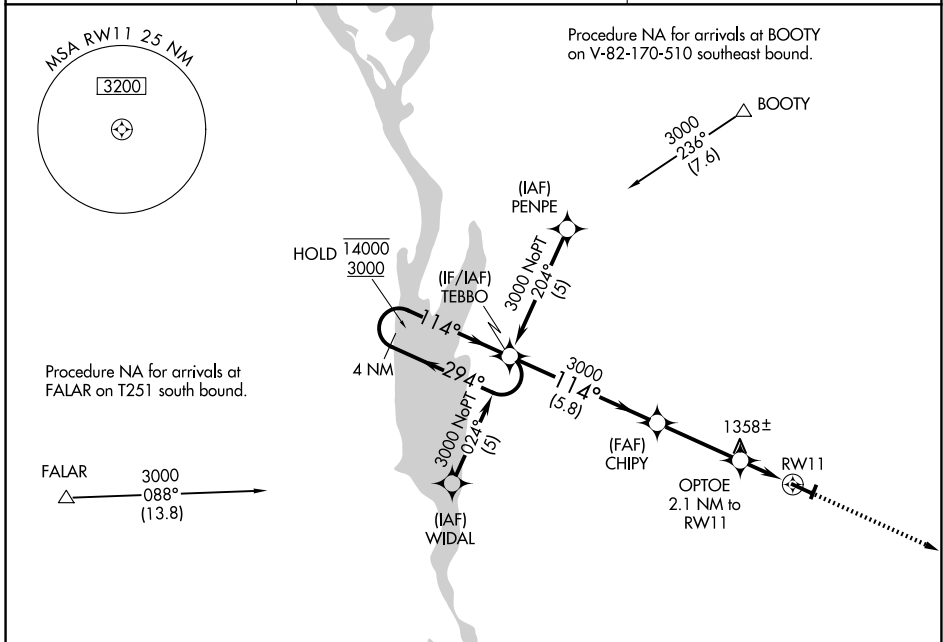


APP CRS	Rwy Ldg	4000
114°	TDZE	1284
	Apt Elev	1292

RNAV (GPS) RWY 11

VIROQUA MUNI (Y51)

RNP APCH.		MISSED APPROACH: Climb to 3000 direct TACON and hold.
Circling NA to Rwy 2 and 20.		
AWOS-3P 118.975	MINNEAPOLIS CENTER 128.6 363.0	CTAF 122.9 0



EC-3, 16 APR 2026 to 14 MAY 2026

EC-3, 16 APR 2026 to 14 MAY 2026

	ELEV 1292	TDZE 1284		
MISSED APCH FIX 				
4 NM Holding Pattern VGS1 and descent angles not coincident (VGS1 Angle 3.00/TCH 35).				
14000 3000 ← 294° 114° →	TEBBO 3000 CHIPY 3000 OPTOE 2.1 NM to RWY 11 1960 3.00° ≥ TCH 40 1 NM to RWY 11 RWY 11	3000 TACON 114° 0.7% UP 4000 X 60 2024 X 80 1.0% UP RWY 20		
5.8 NM 3.3 NM 1.1 NM 1 NM				
CATEGORY	A	B	C	D
RNAV MDA	1620-1	336 (400-1)	NA	
CIRCLING	1900-1 608 (700-1)	1960-1 668 (700-1)	NA	
REIL Rwy 11 and 29 0 MIRL Rwy 11-29 0				