

WAAS CH 90116 W01A	APP CRS 013°	Rwy Ldg TDZE Apt Elev	6000 467 488
--	------------------------	-----------------------------	---

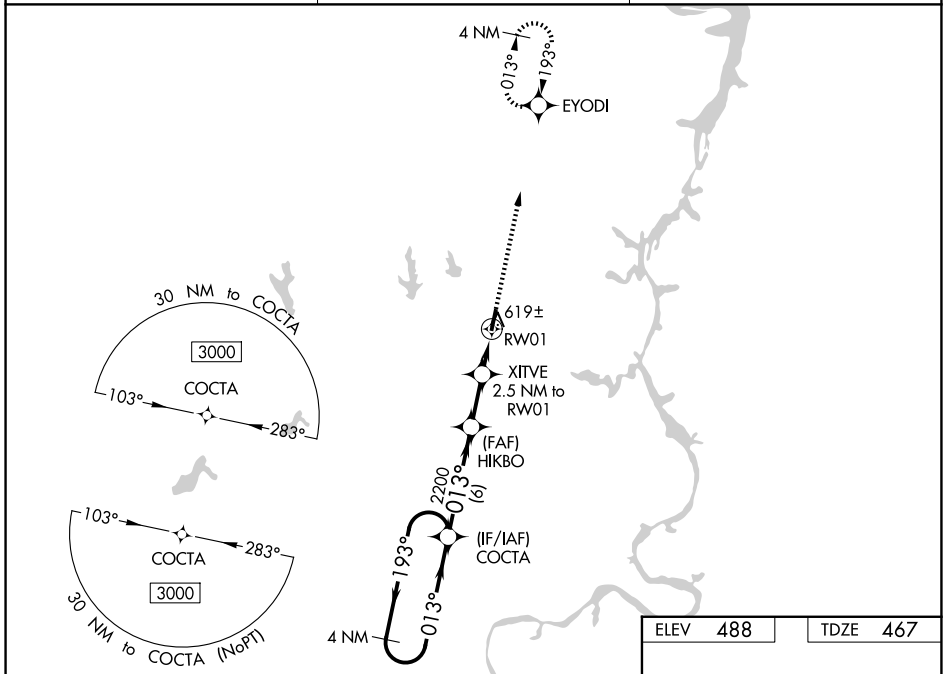
RNAV (GPS) RWY 1

BEECH RIVER RGNL (PVE)

⚠ For uncompensated Baro-VNAV systems, LNAV/VNAV NA below -15°C (5°F) or above 54°C (130°F).
⚠ DME/DMÉ RNP-0.3 NA. When local altimeter setting not received, use Jackson altimeter setting; increase LPV all Cats DA to 807 and all Cats visibility 3/8 mile; increase LNAV/VNAV all Cats DA to 911 and all Cats visibility 3/8 mile; increase all MDA 100 feet and LNAV Cats C/D and Circling Cat C visibility 1/2 mile and Circling Cat D visibility 1/2 mile. Baro-VNAV and VDP NA when using Jackson altimeter setting.

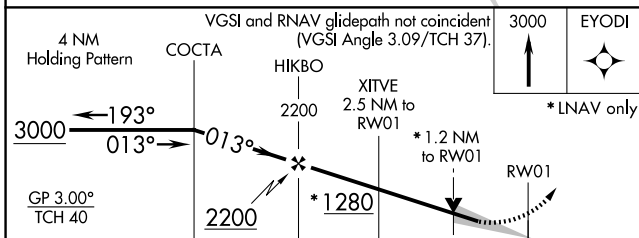
MISSED APPROACH: Climb to 3000 direct EYODI and hold.

AWOS-3 118.125	MEMPHIS CENTER 125.85 379.25	UNICOM 123.0 (CTAF) 0
--------------------------	--	---------------------------------

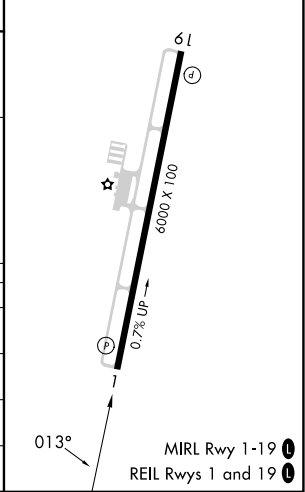


SE-1, 16 APR 2026 to 14 MAY 2026

SE-1, 16 APR 2026 to 14 MAY 2026



ELEV 488	TDZE 467
----------	----------



CATEGORY	A	B	C	D
LPV DA		717-7/8	250 (300-7/8)	
LNAV/VNAV DA		821-1 1/4	354 (400-1 1/4)	
LNAV MDA	880-1	413 (400-1)	880-1 1/8	413 (400-1 1/8)
CIRCLING	940-1 452 (500-1)	980-1 492 (500-1)	1000-1 1/2 512 (600-1 1/2)	1200-2 1/4 712 (800-2 1/4)