

WAAS CH <b>97316</b> <b>W19A</b>	APP CRS <b>193°</b>	Rwy Ldg TDZE Apt Elev	<b>6000</b> <b>488</b> <b>488</b>
--	------------------------	-----------------------------	---

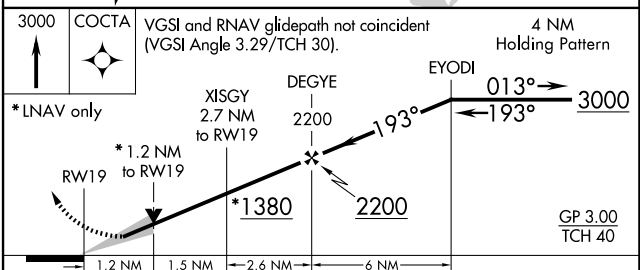
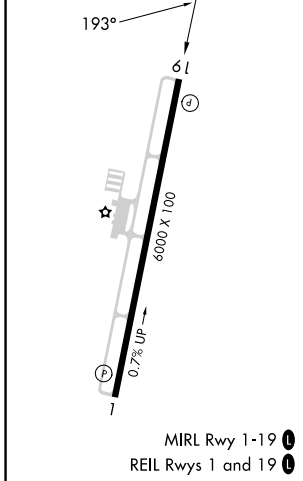
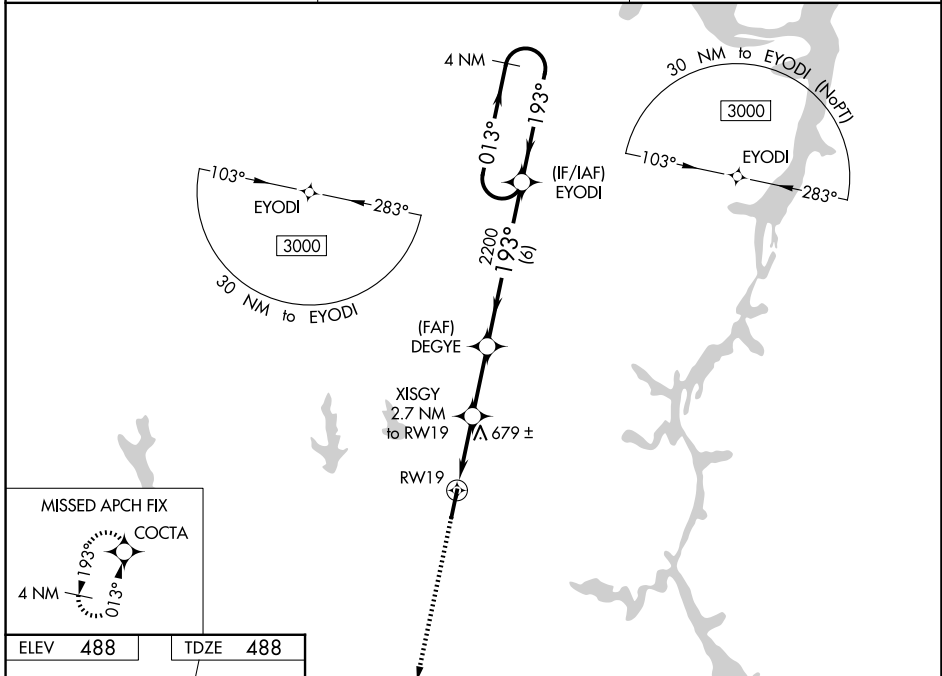
# RNAV (GPS) RWY 19

BEECH RIVER RGNL (PVE)

**⚠** For uncompensated Baro-VNAV systems, LNAV/VNAV NA below -15°C (5 °F) or above 54 °C (130°F).  
**⚠** DME/DME RNP-0.3 NA. When local altimeter setting not received, use Jackson altimeter setting: increase LPV all Cats DA to 828 and all Cats visibility ¼ mile; increase LNAV/VNAV all Cats DA to 890 and all Cats visibility ⅓ mile; increase all MDA 100 feet and LNAV Cats C/D and Circling Cat C visibility ¼ mile and Circling Cat D visibility ½ mile. VDP and Baro-VNAV NA when using Jackson altimeter setting.

MISSED APPROACH: Climb to 3000 direct COCTA and hold.

AWOS-3 <b>118.125</b>	MEMPHIS CENTER <b>125.85 379.25</b>	UNICOM <b>123.0 (CTAF) 0</b>
--------------------------	--	---------------------------------



CATEGORY	A	B	C	D
LPV DA		738-7/8	250 (300-7/8)	
LNAV/VNAV DA		800-1	312 (400-1)	
LNAV MDA	940-1	452 (500-1)	940-1 3/8	452 (500-1 3/8)
CIRCLING	940-1 452 (500-1)	980-1 492 (500-1)	1000-1 1/2 512 (600-1 1/2)	1200-2 1/4 712 (800-2 1/4)

SE-1, 16 APR 2026 to 14 MAY 2026

SE-1, 16 APR 2026 to 14 MAY 2026