

APP CRS 348°	Rwy Ldg TDZE Apt Elev	6004 360 364
------------------------	-----------------------------	---

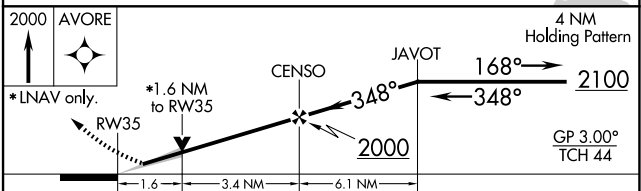
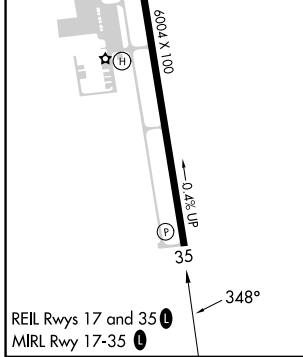
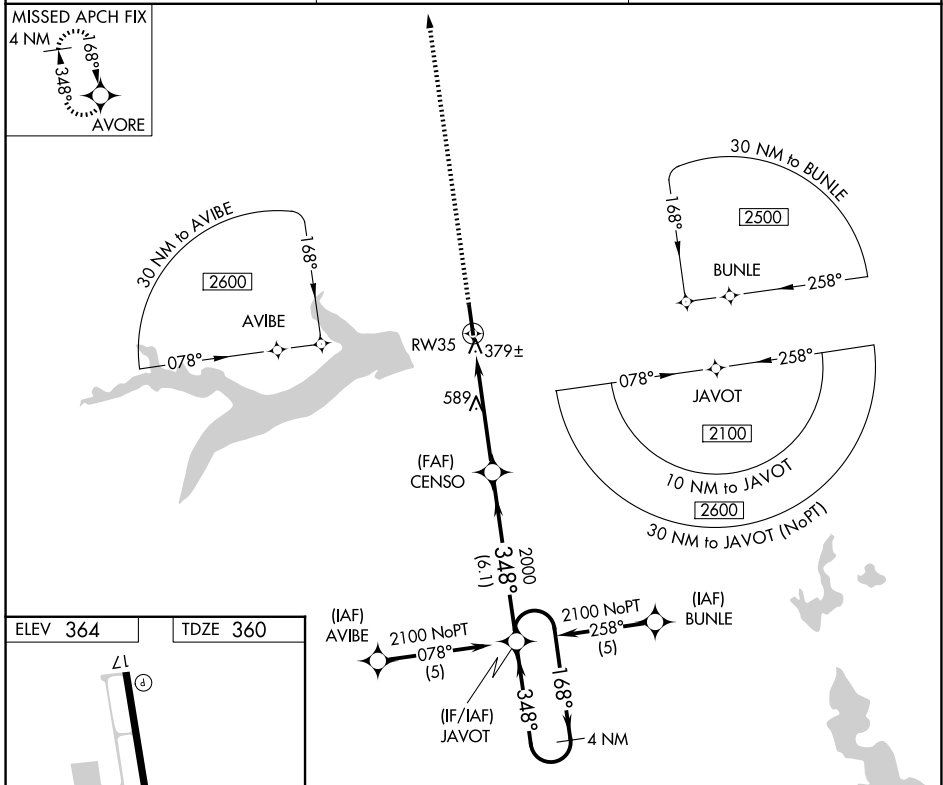
RNAV (GPS) RWY 35

MOUNT PLEASANT RGNL (OSA)

⚠ For uncompensated Baro-VNAV systems, LNAV/VNAV NA below -15°C (5°F) or above 48°C (118°F). DME/DME RNP-0.3 NA. When local altimeter setting not received, use Paris altimeter setting and increase all DA/MDA 120 feet, increase LNAV/VNAV visibilities ½ mile all Cats, LNAV visibilities ¼ mile all Cats and circling visibilities ¼ mile all Cats. VDP and Baro-VNAV NA when using Paris altimeter setting.

⚠ MISSED APPROACH: Climb to 2000 direct AVORE and hold.

AWOS-3 119.775	FORT WORTH CENTER 132.025 317.75	UNICOM 122.7 (CTAF) 📻
--------------------------	--	--



CATEGORY	A	B	C	D
LNAV/VNAV DA	700-1¼ 340 (400-1¼)			
LNAV MDA	900-1 540 (600-1)	900-1½ 540 (600-1½)	900-1¾ 540 (600-1¾)	900-1¾ 540 (600-1¾)
CIRCLING	900-1 536 (600-1)	1040-2 676 (700-2)	1040-2¼ 676 (700-2¼)	1040-2¼ 676 (700-2¼)

SC-2, 16 APR 2026 to 14 MAY 2026

SC-2, 16 APR 2026 to 14 MAY 2026