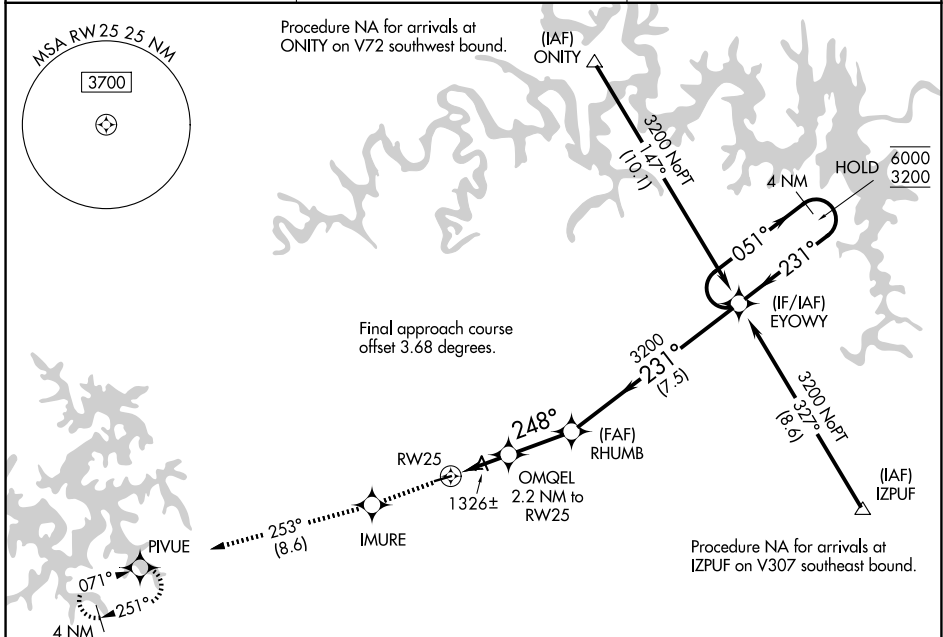


| | | |
|--|------------------------|---|
| WAAS CH 86442 W25A | APP CRS 248° | Rwy Ldg 3555 TDZE 1206 Apt Elev 1206 |
|--|------------------------|---|

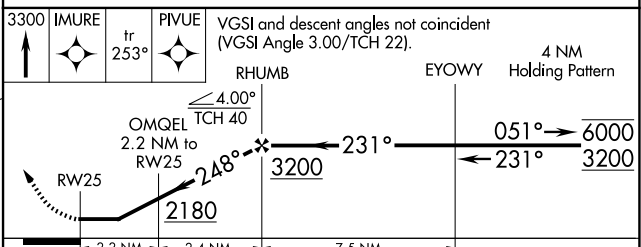
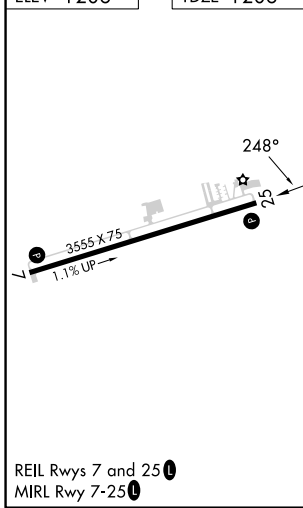
RNAV (GPS) RWY 25

CARROLL COUNTY (4M1)

| | | |
|---|---|--|
| RNP APCH-GPS. | | MISSED APPROACH: Climb to 3300 direct IMURE and on track 253° to PIVUE and hold. |
| <p>▼ Rwy 25 helicopter visibility reduction below 3/4 SM NA. Use Branson altimeter setting; when not received, use Rogers altimeter setting and increase all MDA 20 feet. Circling Rwy 7 NA at night.</p> <p>▲ NA</p> | | |
| BBG AWOS-3 124.625 | RAZORBACK APPROACH* 126.6 305.2 | CTAF 122.90 |



| | |
|-----------|-----------|
| ELEV 1206 | TDZE 1206 |
|-----------|-----------|



| CATEGORY | A | B | C | D |
|----------|-----------------------|-----------------------|---|----|
| LP MDA | 1660-1 | 454 (500-1) | | NA |
| LNAV MDA | 1660-1 | 454 (500-1) | | NA |
| CIRCLING | 1700-1 494 (500-1) | 1980-1 774 (800-1) | | NA |

SC-1, 16 APR 2026 to 14 MAY 2026

SC-1, 16 APR 2026 to 14 MAY 2026