

WAAS CH 40242 W07A	APP CRS 071°	Rwy Ldg TDZE 1203 Apt Elev 1206
--	------------------------	---

RNAV (GPS) RWY 7

CARROLL COUNTY (4M1)

RNP APCH-GPS.

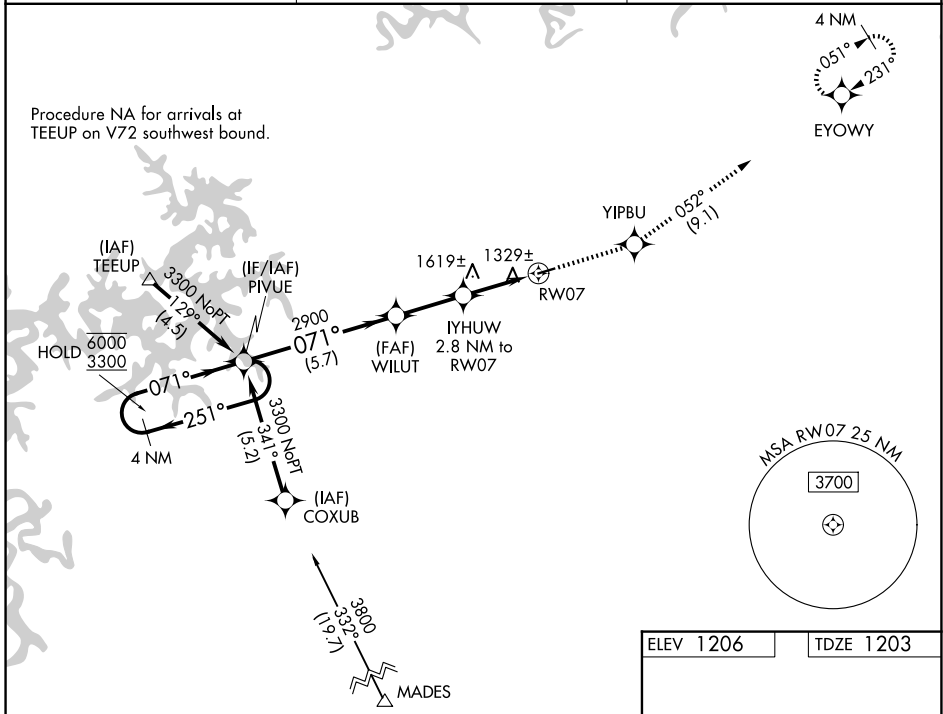
▼ Rwy 7 helicopter visibility reduction below 1 SM NA. Use Branson altimeter setting; when not received, use Rogers altimeter setting and increase all MDA 20 feet. Rwy 7 Straight-in and Circling minimums NA at night.

MISSED APPROACH: Climb to 3300 direct YIPBU and on track 052° to EYOWY and hold.

BGG AWOS-3
124.625

RAZORBACK APPROACH ★
126.6 305.2

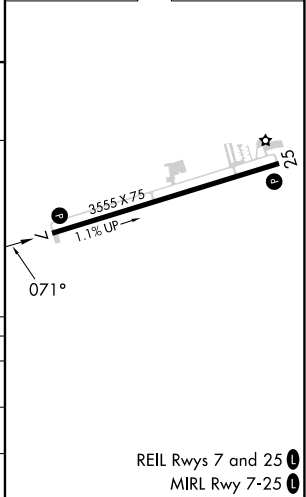
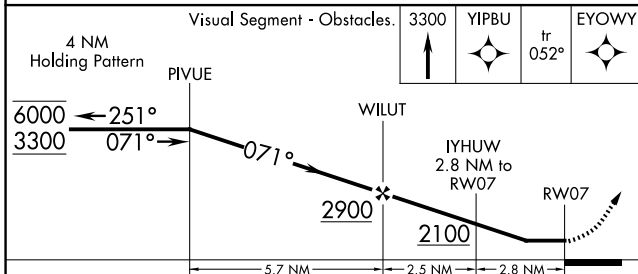
CTAF
122.9



SC-1, 16 APR 2026 to 14 MAY 2026

SC-1, 16 APR 2026 to 14 MAY 2026

ELEV 1206	TDZE 1203
-----------	-----------



CATEGORY	A	B	C	D
LP MDA	1760-1	557 (600-1)	NA	
LNAV MDA	1940-1	737 (800-1)	NA	
CIRCLING	1940-1 734 (800-1)	1980-1 774 (800-1)	NA	

REIL Rwys 7 and 25
MIRL Rwy 7-25