

| | | | |
|--|------------------------|-----------------------------|---|
| WAAS CH 42733 W18A | APP CRS 181° | Rwy Ldg TDZE Apt Elev | 4021 219 219 |
|--|------------------------|-----------------------------|---|

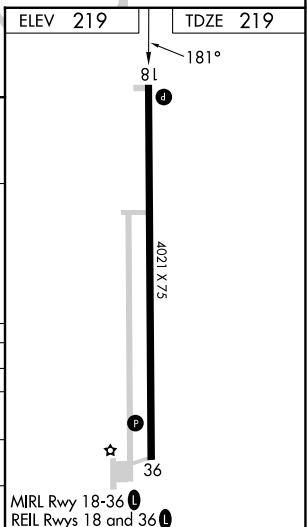
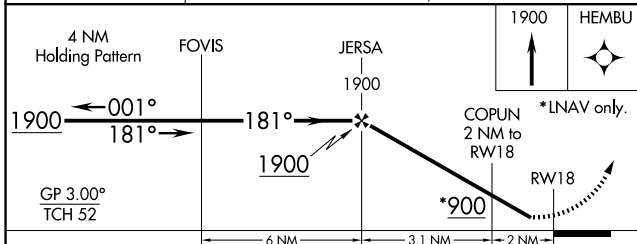
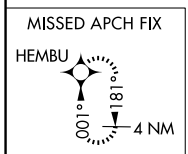
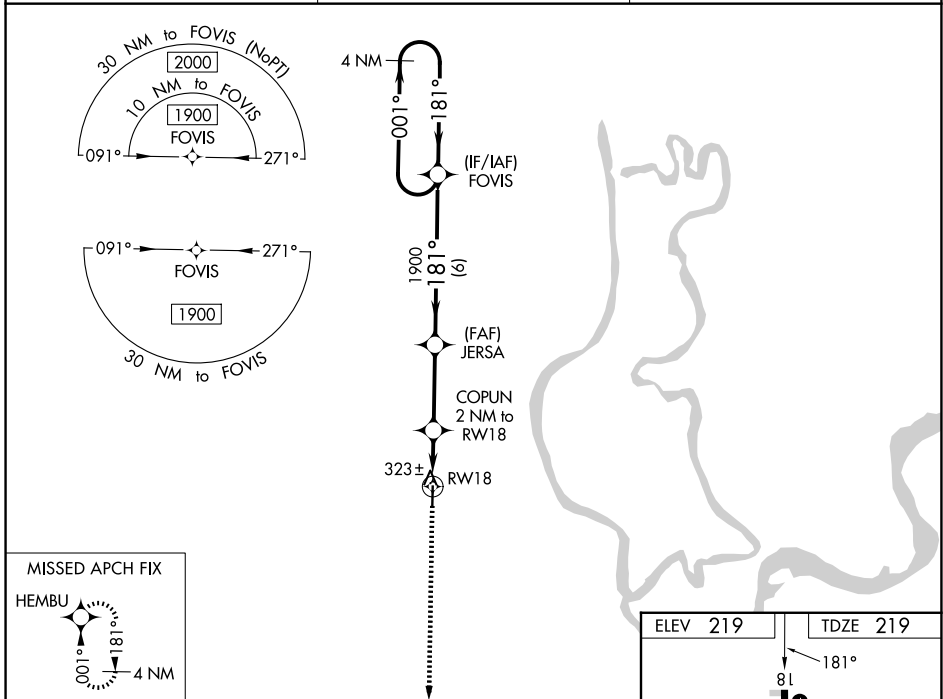
RNAV (GPS) RWY 18

MARIANNA/LEE COUNTY-STEVE EDWARDS FLD (6M7)

▼ Baro-VNAV NA. DME/DME RNP-0.3 NA. Helicopter visibility reduction below 1 SM NA.
▲ NA Rwy 18 Straight-in and Circling Minimums NA at night. Use Tunica altimeter setting, when not available use West Memphis altimeter setting and increase all DA 25 feet and all MDA 40 feet, increase LPV all Cats and LNAV/VNAV all Cats visibility 1/8 mile and Circling Cat C visibility 1/4 mile.

MISSED APPROACH:
Climb to 1900 direct HEMBU and hold.

| | | |
|------------------------------|--------------------------------------|-------------------------------|
| UTA AWOS-3 118.075 | MEMPHIS CENTER 135.3 335.8 | UNICOM 122.8 (CTAF) |
|------------------------------|--------------------------------------|-------------------------------|



| CATEGORY | A | B | C | D |
|--------------|-------|-------------|------------------------------|----|
| LPV DA | 538-1 | 319 (400-1) | | NA |
| LNAV/VNAV DA | 531-1 | 312 (400-1) | | NA |
| LNAV MDA | 660-1 | 441 (500-1) | 660-1 1/8 441 (500-1 1/8) | NA |
| CIRCLING | 920-1 | 701 (800-1) | 920-2 701 (800-2) | NA |

RNAV (GPS) RWY 18

SC-1, 16 APR 2026 to 14 MAY 2026

SC-1, 16 APR 2026 to 14 MAY 2026