

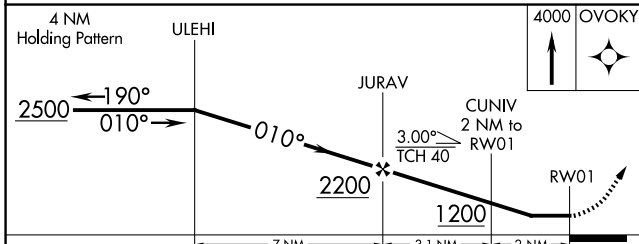
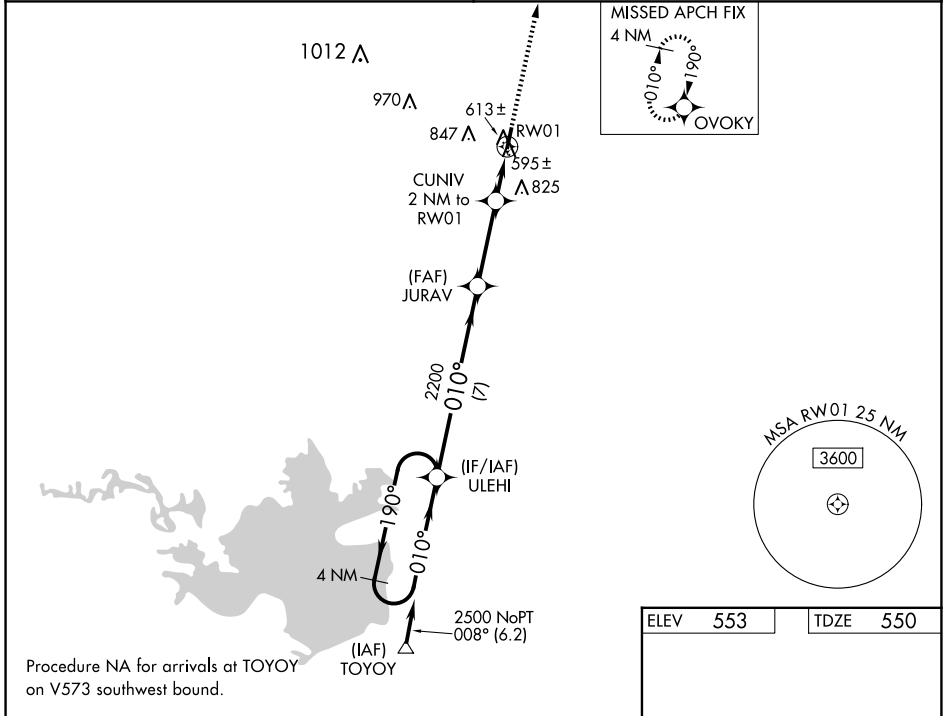
WAAS CH 78425 W01A	APP CRS 010°	Rwy Idg 3879 TDZE 550 Apt Elev 553
---------------------------------	------------------------	---

RNAV (GPS) RWY 1

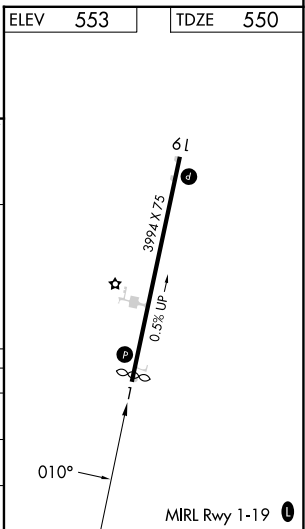
HOWARD COUNTY (M77)

RNP APCH.	<p>▼ Procedure NA at night. Rwy 1 helicopter visibility reduction below 1 SM NA.</p> <p>▲ NA Use De Queen altimeter setting; when not received, use Texarkana altimeter setting and increase all MDA 20 feet.</p>	<p>MISSED APPROACH: Climb to 4000 direct OVOKY and hold, continue climb-in-hold to 4000.</p>
-----------	---	--

<p>FORT WORTH CENTER 123.925 269.475</p>	<p>CTAF 122.9 0</p>
---	--------------------------------



	7 NM		3.1 NM		2 NM	
CATEGORY	A	B	C	D		
LP MDA	940-1	390 (400-1)	NA			
LNAV MDA	960-1	410 (500-1)	NA			
CIRCLING	1100-1 547 (600-1)	1240-1 687 (700-1)	NA			



SC-1, 16 APR 2026 to 14 MAY 2026

SC-1, 16 APR 2026 to 14 MAY 2026