

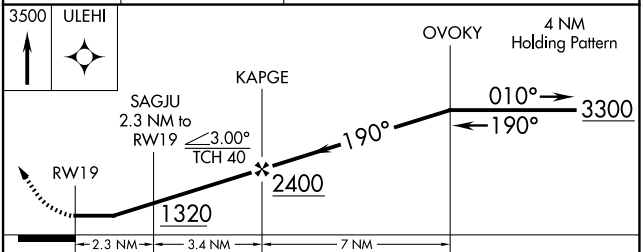
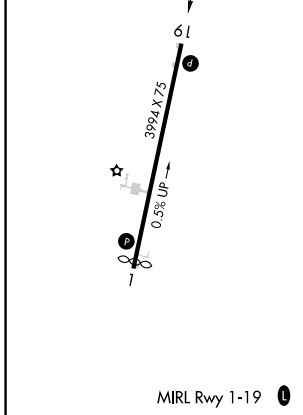
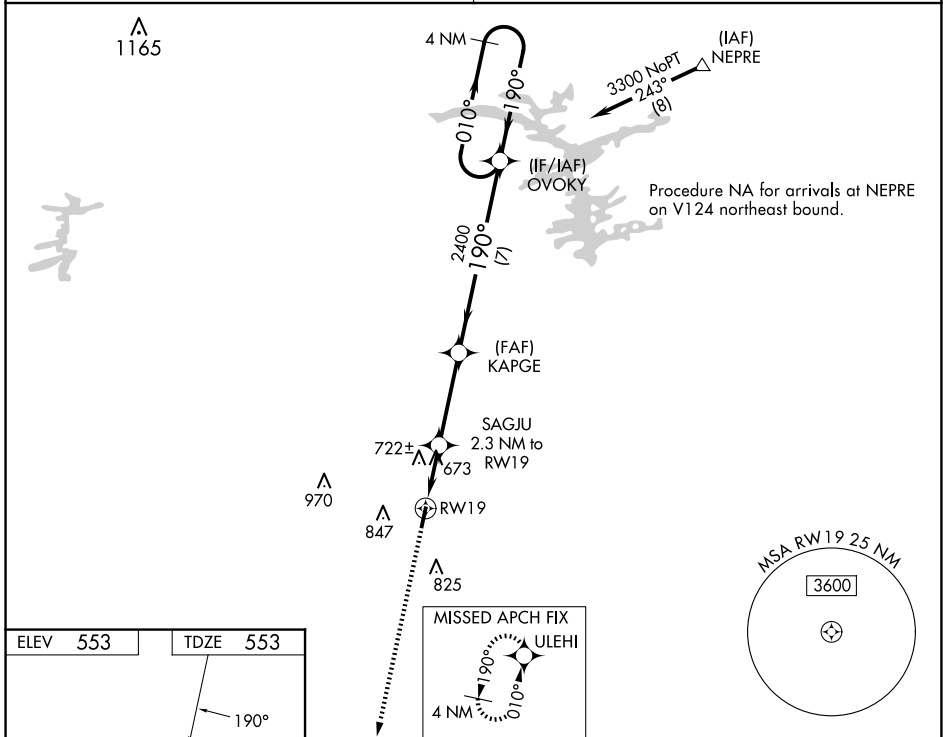
WAAS CH <b>65921</b> <b>W19A</b>	APP CRS <b>190°</b>	Rwy Idg <b>3994</b>
	TDZE <b>553</b>	
	Apt Elev <b>553</b>	

# RNAV (GPS) RWY 19

HOWARD COUNTY (M77)

RNP APCH.	<p>Procedure NA at night. Rwy 19 helicopter visibility reduction below 1 SM NA. Use DE Queen altimeter setting; when not received, use Texarkana altimeter setting and increase all MDA 20 feet.</p>	<p>MISSED APPROACH: Climb to 3500 direct ULEHI and hold.</p>
-----------	--	--

FORT WORTH CENTER <b>123.925 269.475</b>	CTAF <b>122.9</b>
---	----------------------



CATEGORY	A	B	C	D
LP MDA	1080-1	527 (600-1)		NA
LNAV MDA	1080-1	527 (600-1)		NA
CIRCLING	1100-1 547 (600-1)	1240-1 687 (700-1)		NA

SC-1, 16 APR 2026 to 14 MAY 2026

SC-1, 16 APR 2026 to 14 MAY 2026