

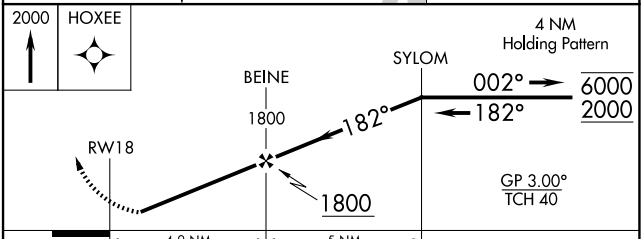
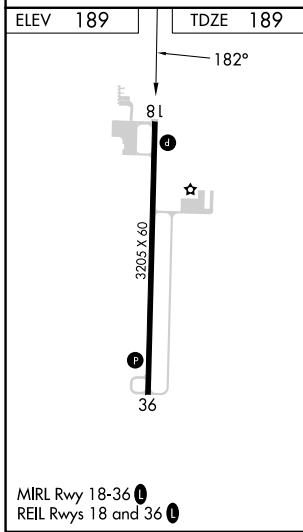
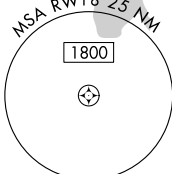
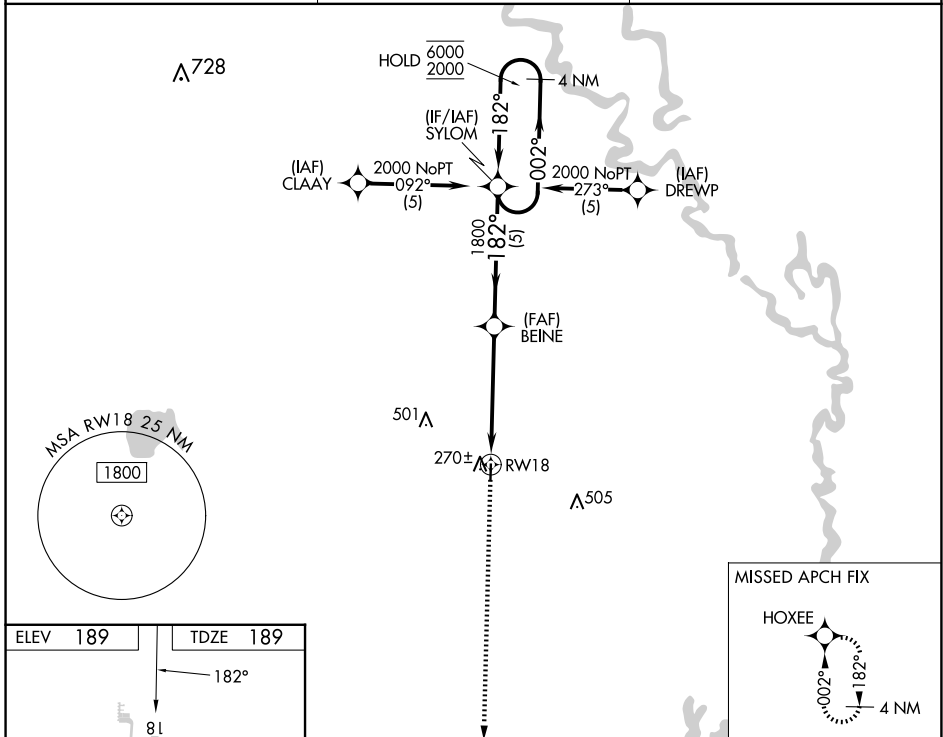
WAAS CH <b>86344</b> W <b>18A</b>	APP CRS <b>182°</b>	Rwy Idg <b>3205</b> TDZE <b>189</b> Apt Elev <b>189</b>
---	------------------------	---

# RNAV (GPS) RWY 18

DEWITT MUNI/WHITCOMB FLD (5M1)

RNP APCH - GPS.	<p><b>⚠</b> Rwy 18 helicopter visibility reduction below <math>\frac{3}{4}</math> SM NA. Baro-VNAV NA. Use Stuttgart altimeter setting; when not received, use Pine Bluff altimeter setting and increase LPV DA to 515 feet, LNAV/VNAV DA to 515 feet, and increase all MDAs 20 feet.</p> <p><b>⚠</b> NA</p>	MISSED APPROACH: Climb to 2000 direct HOXEE and hold.
-----------------	--	---

SGT AWOS-3PT <b>119.025</b>	MEMPHIS CENTER <b>135.3 335.8</b>	CTAF <b>122.9</b>
--------------------------------	--------------------------------------	----------------------



CATEGORY	A	B	C	D
LPV DA	500-1	311 (400-1)	NA	
LNAV/VNAV DA	500-1	311 (400-1)	NA	
LNAV MDA	720-1	531 (600-1)	NA	

SC-1, 16 APR 2026 to 14 MAY 2026

SC-1, 16 APR 2026 to 14 MAY 2026