

WAAS CH <b>97436</b> <b>W17A</b>	APP CRS <b>173°</b>	Rwy Ldg TDZE Apt Elev	<b>4497</b> <b>1387</b> <b>1387</b>
--	------------------------	-----------------------------	---

# RNAV (GPS) RWY 17

COMANCHE COUNTY-CITY (MKN)

RNP APCH - GPS.

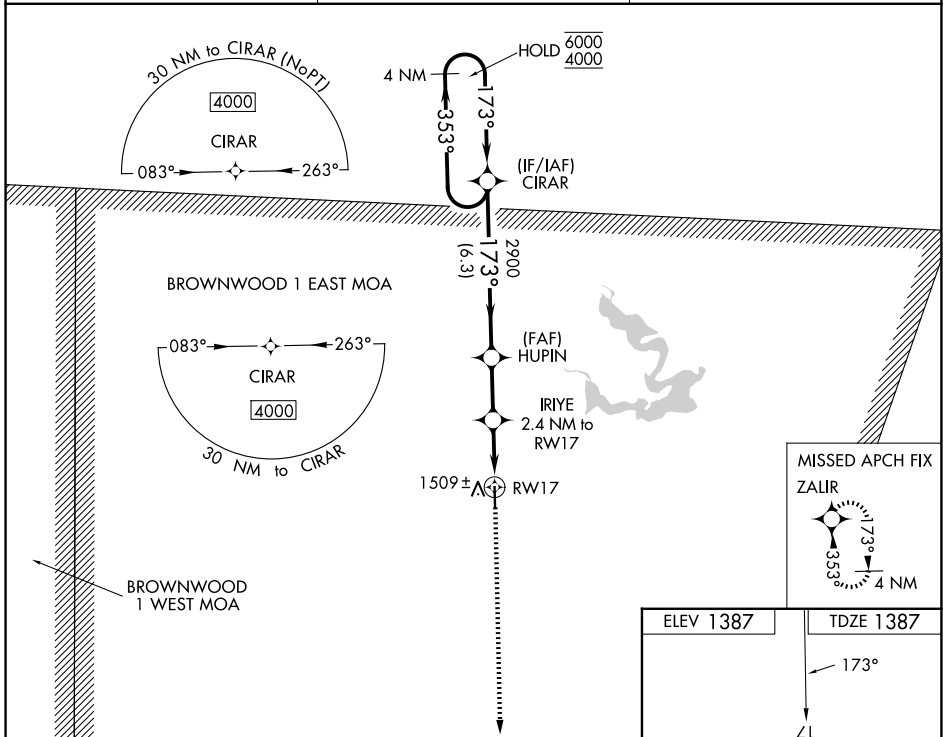
**⚠** Circling to Rwy 35 NA at night. For uncompensated Baro-VNAV systems, LNAV/VNAV NA below -17°C or above 54°C. Baro-VNAV and VDP NA when using BWD altimeter setting. When local altimeter setting not received, use BWD altimeter setting and increase all DA 46 feet and all MDAs 60 feet.

**MISSED APPROACH:** Climb to 4000 direct ZALIR and hold, continue climb-in-hold to 4000.

AWOS-3  
**118.575**

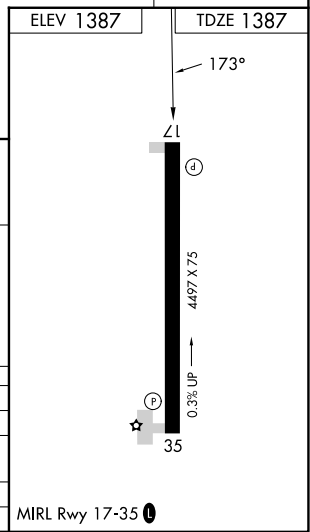
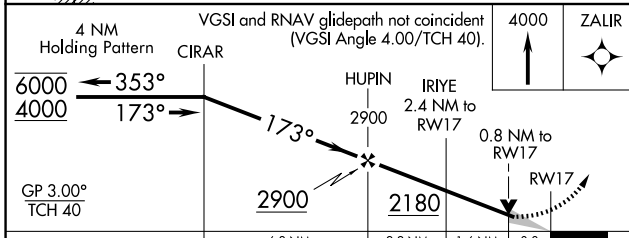
FORT WORTH CENTER  
**135.375 354.05**

UNICOM  
**123.075 (CTAF) 0**



SC-3, 16 APR 2026 to 14 MAY 2026

SC-3, 16 APR 2026 to 14 MAY 2026



CATEGORY	A	B	C	D
LPV DA	1637-1	250 (300-1)		NA
LNAV/VNAV DA	1690-1	303 (400-1)		NA
LNAV MDA	1760-1	373 (400-1)		NA
CIRCLING	2120-1	733 (800-1)		NA

MIRL Rwy 17-35 0