

WAAS CH <b>77901</b> <b>W14A</b>	APP CRS <b>138°</b>	Rwy Idg TDZE Apt Elev	<b>5000</b> <b>75</b> <b>75</b>
--	------------------------	-----------------------------	---------------------------------------

# RNAV (GPS) RWY 14

SOUTH TEXAS INTL AT EDINBURG (E.BG)

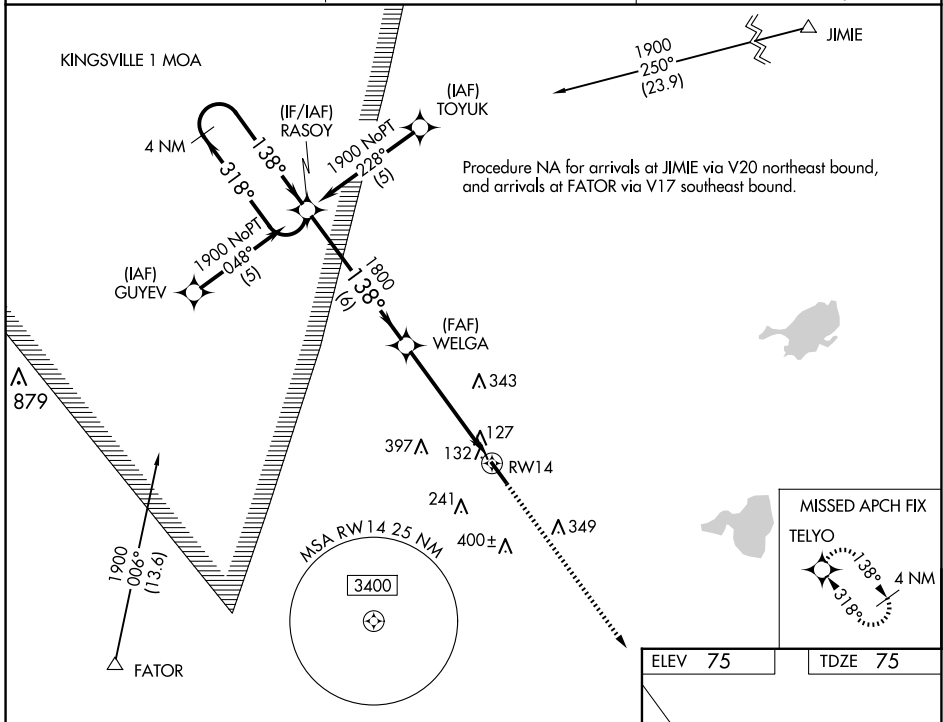
RNP APCH.  
 Rwy 14 helicopter visibility reduction below 3/4 SM NA.  
 For uncompensated Baro-VNAV systems, LNAV/VNAV NA below -1.5°C (5°F) or above 48°C (120°F).

MISSED APPROACH: Climb to 1900 direct TELYO and hold.

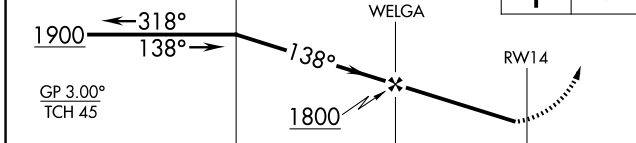
AWOS-3PT  
**118.025**

VALLEY APP CON  
**126.55 377.2**

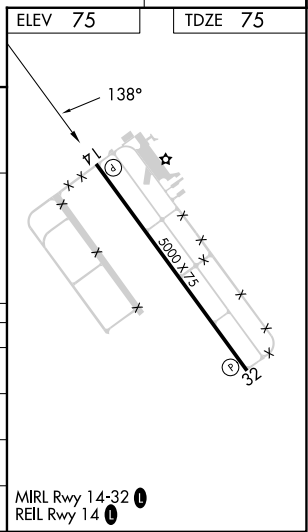
UNICOM  
**122.8** (CTAF)



4 NM Holding Pattern  
 VGSI and RNAV glidepath not coincident (VGSI Angle 3.00/TCH 42).  
 1900 TELYO



CATEGORY	A	B	C	D
LPV DA		325-1	250 (300-1)	
LNAV/VNAV DA		441-1¼	366 (400-1¼)	
LNAV MDA	440-1	365 (400-1)		440-1¼ 365 (400-1¼)
CIRCLING	500-1¼ 425 (500-1¼)	620-1¼ 545 (600-1¼)	760-2 685 (700-2)	760-2¼ 685 (700-2¼)



MIRL Rwy 14-32   
 REIL Rwy 14

SC-3, 16 APR 2026 to 14 MAY 2026

SC-3, 16 APR 2026 to 14 MAY 2026