

WAAS CH 78301 W13A	APP CRS 133°	Rwy Ldg 4999 TDZE 18 Apt Elev 18
--	------------------------	---

RNAV (GPS) RWY 13

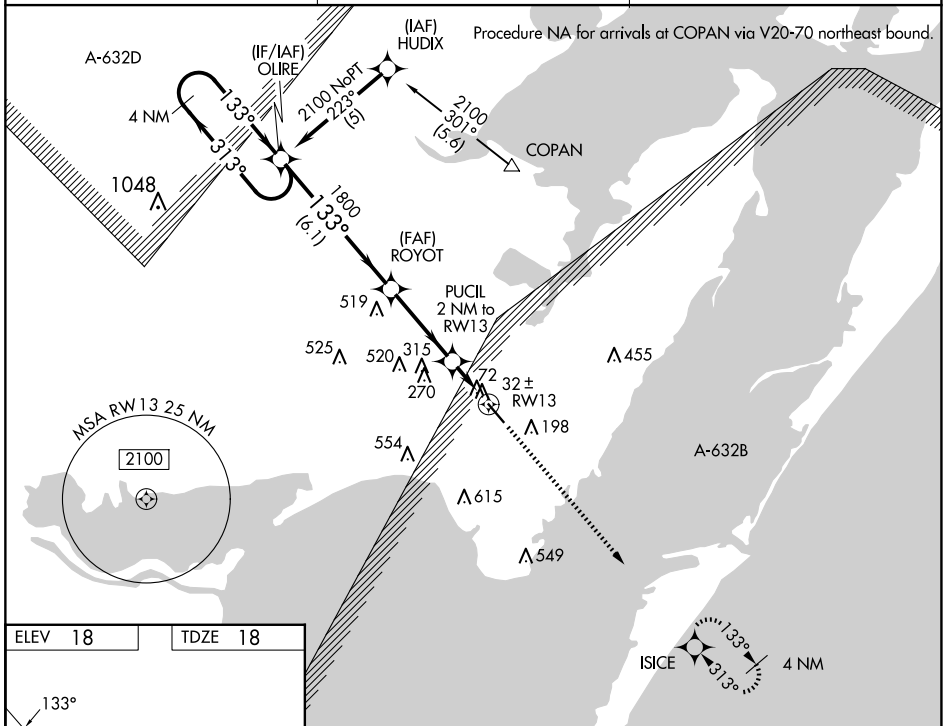
INGLESIDE RGNL (TFP)

RNP APCH-GPS.

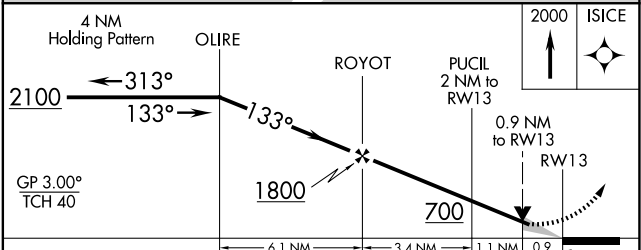
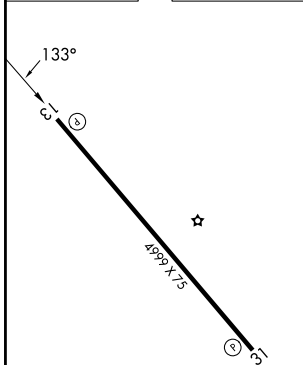
⚠ Baro-VNAV NA when using Mustang Beach altimeter setting. For uncompensated Baro-VNAV systems, LNAV/VNAV NA below -15°C or above 49°C. When local altimeter setting not received, use Mustang Beach altimeter setting: increase LPV DA to 292 feet; increase LNAV/VNAV DA to 310 feet; increase all MDAs 40 feet and Circling visibility Cat C ¼ SM. VDP NA when using Mustang Beach altimeter setting.

MISSED APPROACH:
Climb to 2000 direct ISICE and hold.

AWOS-3 118.775	CORPUS APP CON 120.9 348.725	UNICOM 122.7 (CTAF) 0
--------------------------	--	---------------------------------



ELEV 18	TDZE 18
---------	---------



CATEGORY	A	B	C	D
LPV DA		268-¾	250 (300-¾)	
LNAV/VNAV DA		286-⅞	268 (300-⅞)	
LNAV MDA		340-1	322 (400-1)	
CIRCLING	520-1	502 (600-1)	860-2½ 842 (900-2½)	980-3 962 (1000-3)

MIRL Rwy 13-31 0
REIL Rwy 13 and 31

SC-3, 16 APR 2026 to 14 MAY 2026

SC-3, 16 APR 2026 to 14 MAY 2026