

WAAS CH 82601 W31A	APP CRS 313°	Rwy Ldg 4999 TDZE 18 Apt Elev 18
--	------------------------	---

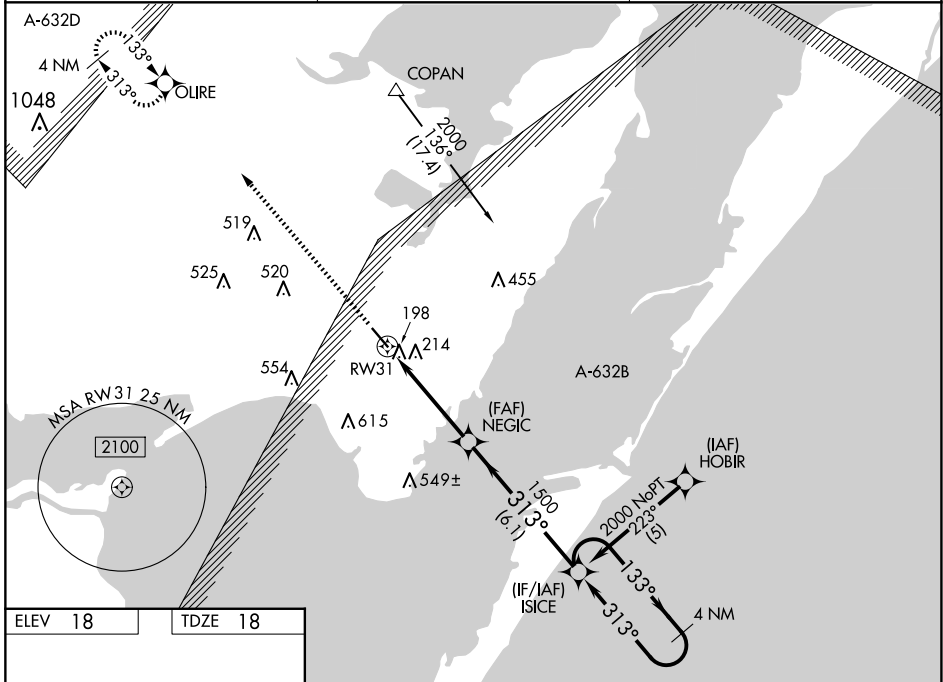
RNAV (GPS) RWY 31

INGLESIDE RGNL (TFP)

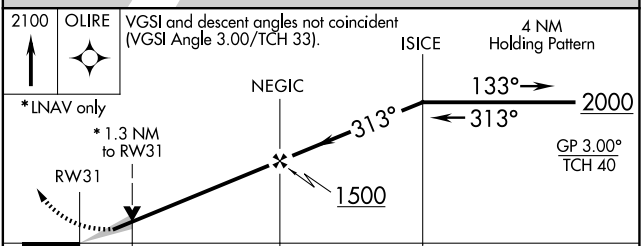
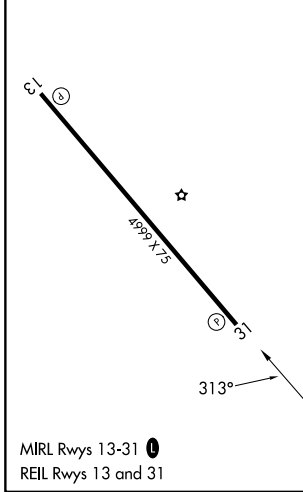
⚠ Baro-VNAV NA when using Mustang Beach altimeter setting. For uncompensated Baro-VNAV systems, LNAV/VNAV NA below -15°C (5°F) or above 48°C (118°F).
W When local altimeter setting not received, use Mustang Beach altimeter setting: increase LPV DA to 292 feet; increase LNAV/VNAV DA to 534 feet; increase all MDAs 40 feet, LNAV and Circling visibility Cat C ¼ SM. VDP NA when using Mustang Beach altimeter setting. DME/DME RNP-0.3 NA.

MISSED APPROACH:
Climb to 2100 direct
OLIRE and hold.

AWOS-3 118.775	CORPUS APP CON 120.9 348.725	UNICOM 122.7 (CTAF) 0
--------------------------	--	---------------------------------



ELEV 18	TDZE 18
---------	---------



CATEGORY	A	B	C	D
LPV DA	268-1		250 (300-1)	
LNAV/VNAV DA	510-1¾ 492 (500-1¾)			
LNAV MDA	480-1	462 (500-1)	480-1¼ 462 (500-1¼)	480-1½ 462 (500-1½)
CIRCLING	520-1	502 (600-1)	860-2½ 842 (900-2½)	980-3 962 (1000-3)

SC-3, 16 APR 2026 to 14 MAY 2026

SC-3, 16 APR 2026 to 14 MAY 2026