

APP CRS	Rwy Ldg	N/A
333°	TDZE	N/A
	Apt Elev	63

RNAV (GPS)-A

AUBURN MUNI (S50)

RNP APCH - GPS.

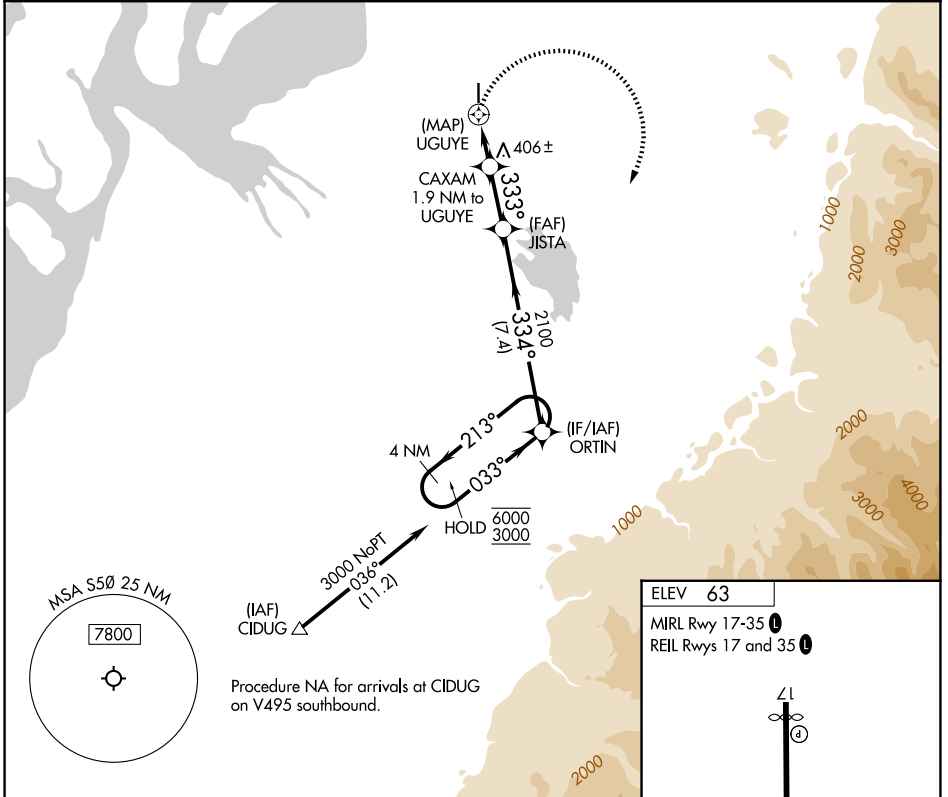
NA Circling NA west of Rwy 17-35. Rwy 17 and 35 helicopter visibility reduction below 1 SM NA. When Circling to Rwy 17, 35 at night, operational VGSI required, remain on or above VGSI glidepath until threshold. Use Seattle-Tacoma Intl altimeter setting. Procedure NA at night when VGSI inoperative.

MISSED APPROACH: Climbing right turn to 3000 direct ORTIN and hold.

SEA ASOS
118.0

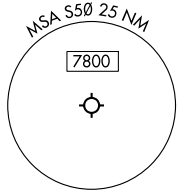
SEATTLE APP CON
123.85

UNICOM
122.975 (CTAF)



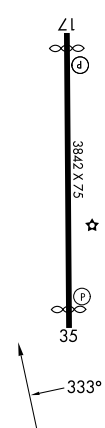
NW-1, 16 APR 2026 to 14 MAY 2026

NW-1, 16 APR 2026 to 14 MAY 2026



Procedure NA for arrivals at CIDUG on V495 southbound.

ELEV 63
MIRL Rwy 17-35
REIL Rws 17 and 35



3000	ORTIN	ORTIN	4 NM Holding Pattern
UGUYE	CAXAM 1.9 NM to UGUYE	JISTA	ORTIN
	333°	2100	213° → 6000 ← 033° 3000
	1140		
	1.9 NM	2.3 NM	7.4 NM
CATEGORY	A	B	C
CIRCLING	920-1¼ 857 (900-1¼)	1040-1½ 977 (1000-1½)	NA