

APP CRS	Rwy Idg	5003
191°	TDZE	39
	Apt Elev	62

RNAV (GPS) RWY 19

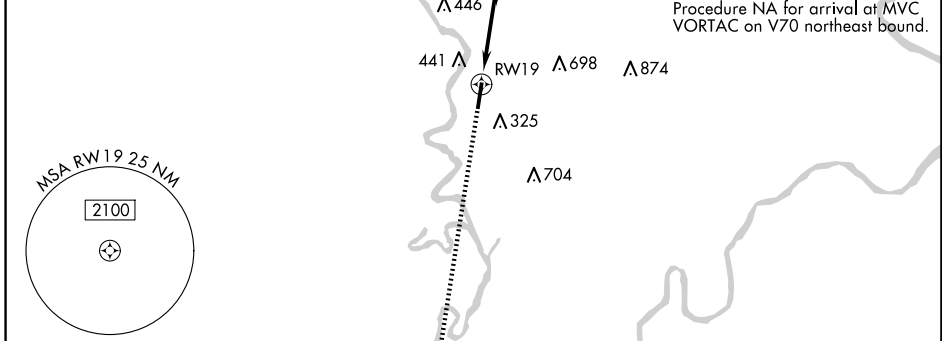
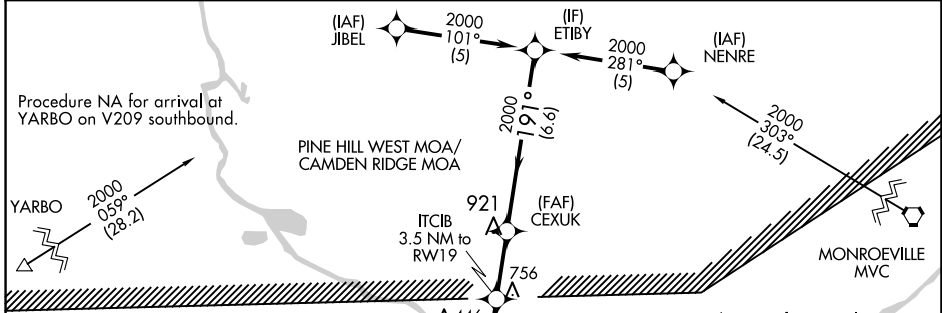
JACKSON MUNI (4R3)

RNP APCH-GPS.

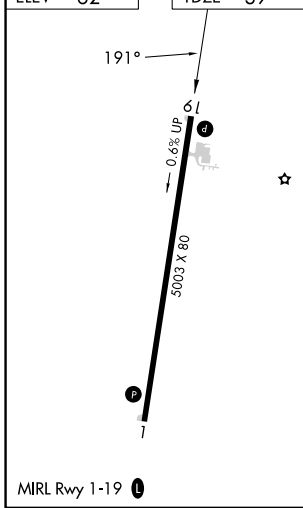
Procedure NA at night. Rwy19 helicopter visibility reduction below 1 SM NA. Obtain local altimeter setting on CTAF, when not received, use MOB altimeter setting and increase all MDAs 20 feet.

MISSED APPROACH: Climb to 2000 direct WAKVA and hold.

GZH ASOS 133.425	HOUSTON CENTER 127.65 285.475	CTAF 122.90
----------------------------	---	-----------------------



ELEV 62	TDZE 39
---------	---------



2000 WAKVA	Visual Segment - Obstacles.			ETIBY Procedure Turn NA
	2000 CEXUK	ITCIB 3.5 NM to RW19 1320	RW19 3.5 NM	
CATEGORY	A	B	C	D
LNAV MDA	1000-1¼ 961 (1000-1¼)	1000-1½ 961 (1000-1½)	1000-3	961 (1000-3)
CIRCLING	1000-1¼ 938 (1000-1¼)	1000-1½ 938 (1000-1½)	1000-3 938 (1000-3)	1140-3 1078 (1100-3)

SE-4, 16 APR 2026 to 14 MAY 2026

SE-4, 16 APR 2026 to 14 MAY 2026