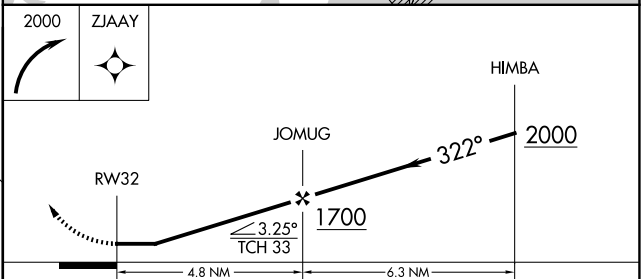
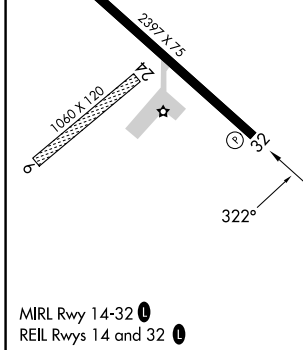
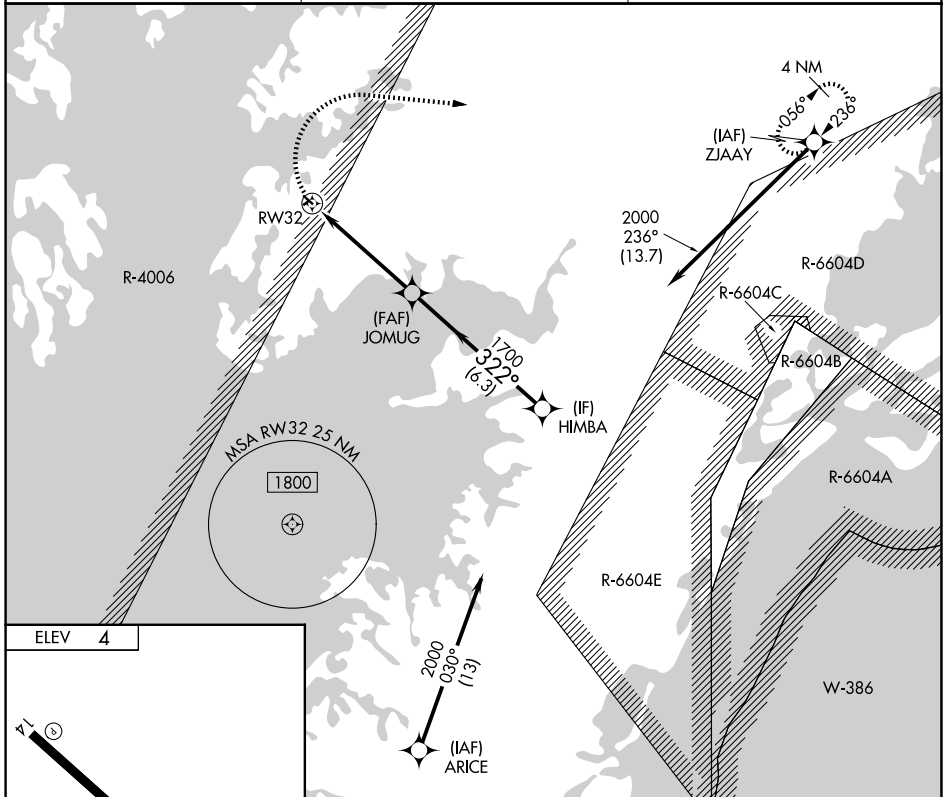


APP CRS 322°	Rwy Ldg TDZE Apt Elev	N/A N/A 4
------------------------	-----------------------------	--------------------------------------

RNAV (GPS)-B

CRISFIELD-SOMERSET COUNTY (W41)

RNP APCH - GPS.		MISSED APPROACH: Climbing right turn to 2000 direct ZJAA Y and hold.
<p>NA Circling NA to Rwy 6 and 24. Procedure NA at night. Use WAL altimeter setting. Rwy 14, 32 helicopter visibility reduction below 1 SM NA.</p>		
WAL ASOS 119.175	PATUXENT APP CON ★ 127.95 314.0	UNICOM 122.8 (CTAF) 0



CATEGORY	A	B	C	D
CIRCLING	520-1 516 (600-1)	560-1 556 (600-1)	NA	

NE-3, 16 APR 2026 to 14 MAY 2026

NE-3, 16 APR 2026 to 14 MAY 2026