

VORTAC ROD 117.5 Chan 122	APP CRS 249°	Rwy Idg TDZE 1122 Apt Elev 1122	5000
---	------------------------	---	-------------

VOR RWY 25

BELLEFONTAINE RGNL (E.D.J)

DME required.

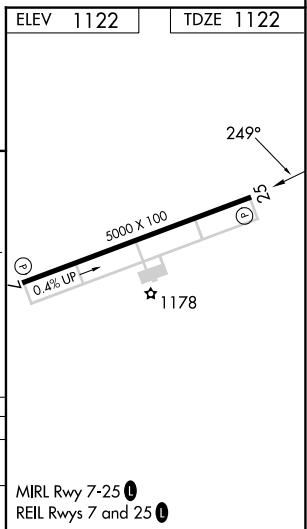
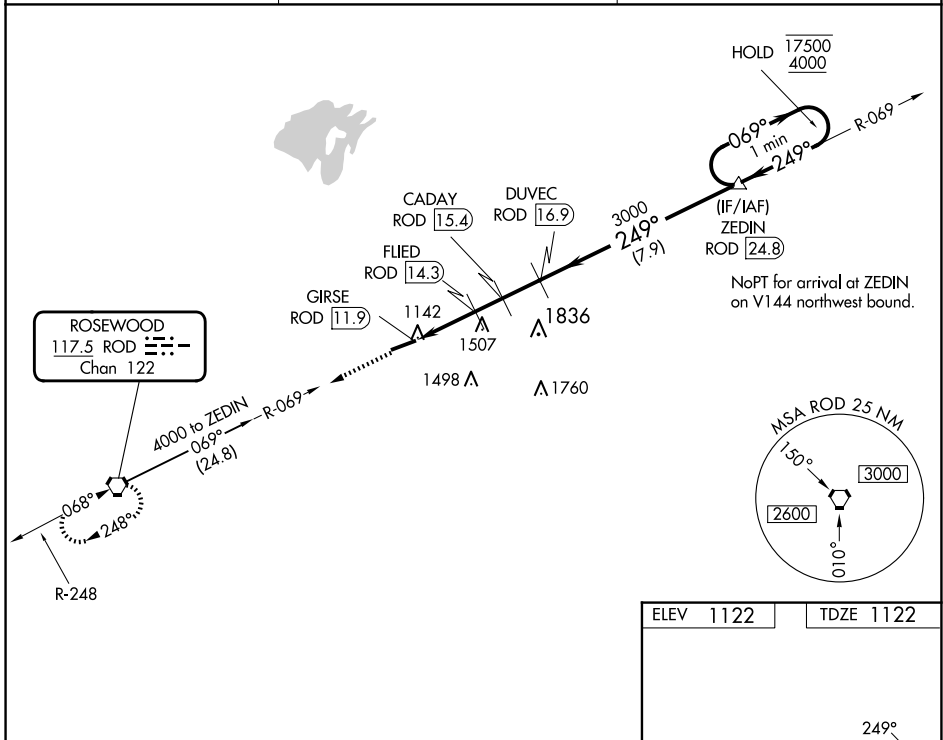
⚠ Rwy 25 helicopter visibility reduction below ¾ SM NA. When local altimeter setting not received, use James M Cox Dayton Intl altimeter setting and increase all MDAs 100 feet, and S-25 visibility Cats C and D ½ SM, and Circling visibility Cats A, C, and D ¼ SM. VDP NA when using James M Cox Dayton Intl altimeter setting.

MISSED APPROACH: Climb to 3000 on ROD R-069 to ROD VORTAC and hold.

AWOS-3
118.075

COLUMBUS APP CON
134.45 294.5

UNICOM
122.8 (CTAF) 0



3000	ROD R-069	ROD	VGSI and descent angles not coincident (VGSI Angle 4.00/TCH 57).	One Minute Holding Pattern
			ZEDIN ROD 24.8	
			DUVEC ROD 16.9	
			CADAY ROD 15.4	
			FLIED ROD 14.3	
			GIRSE ROD 11.9	
			2060	
			2460	
			3000	
			1750	
			4000	
			249°	
			069°	
			249°	
			1750	
			4000	
			0.4% UP	
			5000 X 100	
			1178	
			249°	
			25	
			1.7 NM	
			0.8 NM	
			1.1 NM	
			1.5 NM	
			7.9 NM	
CATEGORY	A	B	C	D
S-25	1880-1 758 (800-1)	1880-1¼ 758 (800-1¼)	1880-2	758 (800-2)
CIRCLING	1880-1 758 (800-1)	1880-1¼ 758 (800-1¼)	1880-2¼ 758 (800-2¼)	2000-2¾ 878 (900-2¾)
			MIRL Rwy 7-25 0	REIL Rws 7 and 25 0

EC-2, 16 APR 2026 to 14 MAY 2026

EC-2, 16 APR 2026 to 14 MAY 2026