

WAAS CH 56538 W18A	APP CRS 181°	Rwy Ldg 5002 TDZE 845 Apt Elev 845
--	------------------------	---

RNAV (GPS) RWY 18

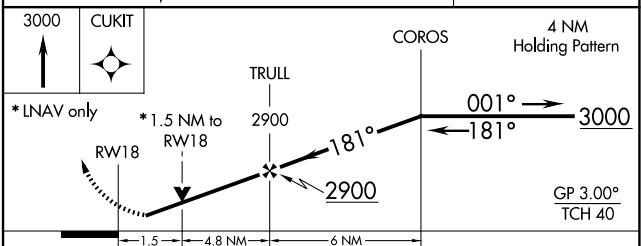
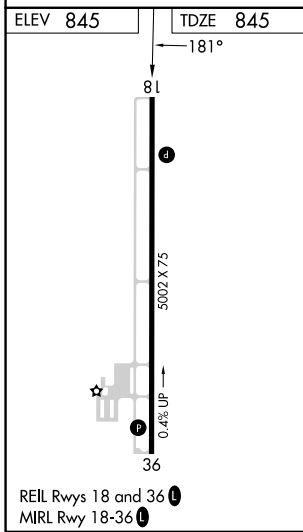
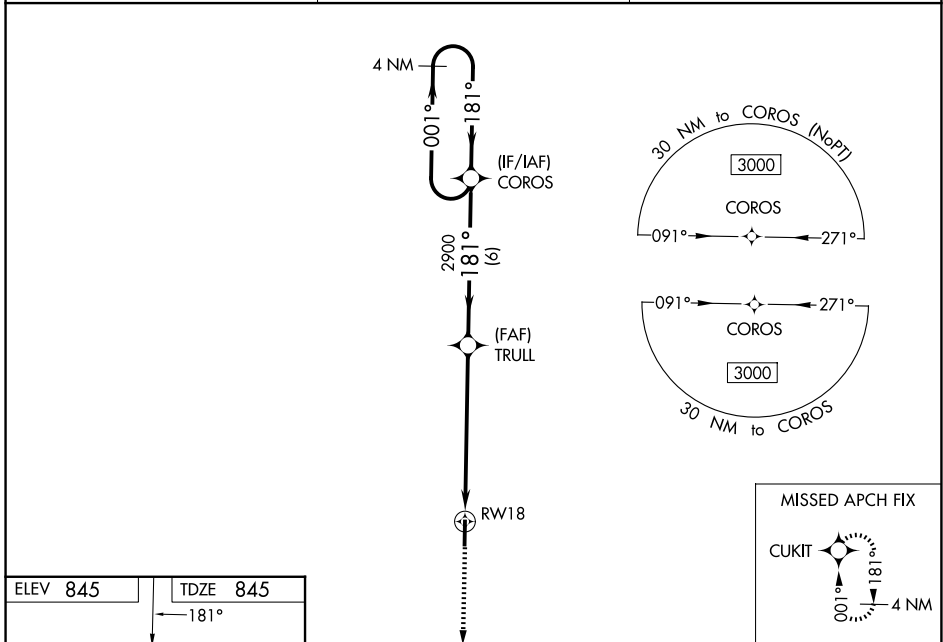
NORTH CENTRAL MISSOURI RGNL (M08)

RNP APCH.

⚠ NA For uncompensated Baro-VNAV systems, LNAV/VNAV NA below -16°C or above 54°C. Baro-VNAV and VDP NA when using Kirksville altimeter setting. When local altimeter setting not received, use Kirksville altimeter setting and increase LPV and LNAV/VNAV DA all Cats to 1179 feet and increase visibility 1/8 mile all Cats; increase all MDA 100 feet and increase LNAV Cat C/D visibility 3/8 mile and Circling Cat C visibility 1/4 mile. Rwy 18 helicopter visibility reduction below 3/4 SM NA.

MISSED APPROACH: Climb to 3000 direct CUKIT and hold.

AWOS-2 118.425	KANSAS CITY CENTER 125.25 235.975	CTAF 122.9 0
--------------------------	---	------------------------



CATEGORY	A	B	C	D
LPV DA		1095-1	250 (300-1)	
LNAV/VNAV DA		1095-1	250 (300-1)	
LNAV MDA	1360-1	515 (600-1)	1360-1 3/8	515 (600-1 3/8)
CIRCLING	1360-1	515 (600-1)	1360-1 1/2	1400-2
			515 (600-1 1/2)	555 (600-2)

NC-3, 16 APR 2026 to 14 MAY 2026

NC-3, 16 APR 2026 to 14 MAY 2026