

(BNGOS4.BNGOS) 24081

AL-10263 (FAA)

BNGOS FOUR DEPARTURE (RNAV)

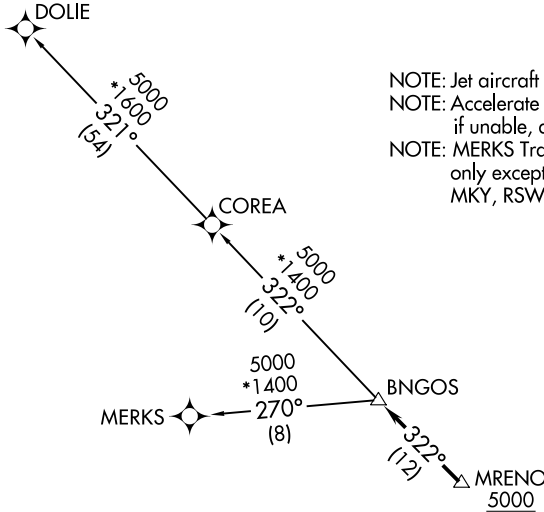
MIAMI HOMESTEAD GENERAL AVIATION (X51)
HOMESTEAD, FLORIDA

RNAV-1 DME/DME/IRU or GPS.

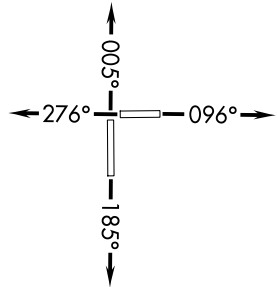
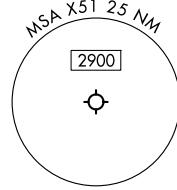
RADAR required.

**TOP ALTITUDE:
ASSIGNED BY ATC**

MIAMI DEP CON
125.5 354.1
AWOS-3
118.375
CTAF
122.8



NOTE: Jet aircraft only.
 NOTE: Accelerate to 250K until leaving 10000, if unable, advise ATC.
 NOTE: MERKS Transition ATC assigned only except aircraft landing: MKY, RSW, APF, PGD and FMY.



TAKEOFF MINIMUMS

- Rwy 10: Standard with minimum climb of 500'/NM to 2400.
- Rwy 18: Standard with minimum climb of 500'/NM to 1800.
- Rwy 28: Standard with minimum climb of 500'/NM to 1900.
- Rwy 36: Standard with minimum climb of 500'/NM to 2200.

NOTE: Chart not to scale.



DEPARTURE ROUTE DESCRIPTION

- TAKEOFF RUNWAY 10: Climb on heading 096° or as assigned by ATC for RADAR vectors to cross MRENO at or above 5000, thence. . .
- TAKEOFF RUNWAY 18: Climb on heading 185° or as assigned by ATC for RADAR vectors to cross MRENO at or above 5000, thence. . .
- TAKEOFF RUNWAY 28: Climb on heading 276° or as assigned by ATC for RADAR vectors to cross MRENO at or above 5000, thence. . .
- TAKEOFF RUNWAY 36: Climb on heading 005° or as assigned by ATC for RADAR vectors to cross MRENO at or above 5000, thence. . .

. . . on track 322° to BNGOS, then on assigned transition, maintain ATC assigned altitude, expect filed altitude within 10 minutes after departure.

- COREA TRANSITION (BNGOS4.COREA)
- DOLIE TRANSITION (BNGOS4.DOLIE)
- MERKS TRANSITION (BNGOS4.MERKS)

BNGOS FOUR DEPARTURE (RNAV)
(BNGOS4.BNGOS) 21MAR24

HOMESTEAD, FLORIDA
MIAMI HOMESTEAD GENERAL AVIATION (X51)

SE-3, 16 APR 2026 to 14 MAY 2026

SE-3, 16 APR 2026 to 14 MAY 2026