

MIAMI DEP CON  
125.5 354.1  
AWOS-3  
118.375  
CTAF  
122.8

RNAV 1 - DME/DME/IRU or GPS.  
From SLIPT to MAXIM: RNAV 1- GPS.  
From SLIPT to CANOA: RNAV 1- GPS.

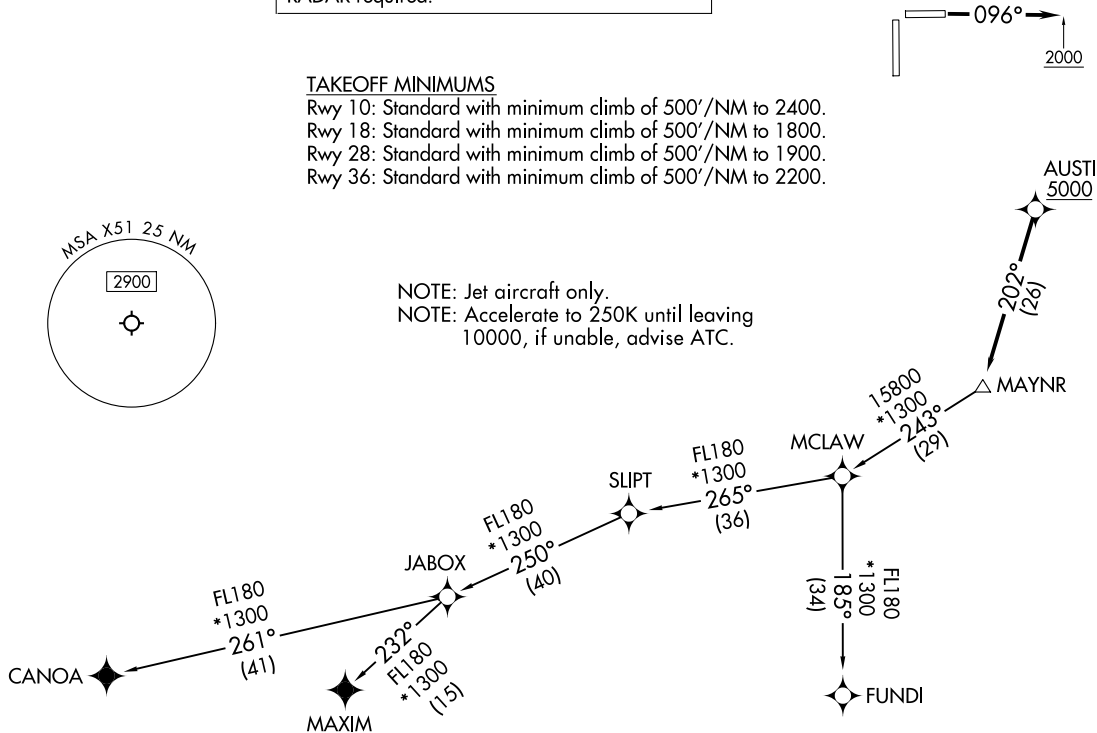
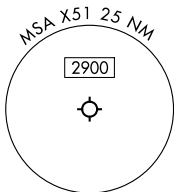
RADAR required for non-GPS equipped aircraft.  
RADAR required.

**TOP ALTITUDE:  
ASSIGNED BY ATC**

**TAKEOFF MINIMUMS**

- Rwy 10: Standard with minimum climb of 500'/NM to 2400.
- Rwy 18: Standard with minimum climb of 500'/NM to 1800.
- Rwy 28: Standard with minimum climb of 500'/NM to 1900.
- Rwy 36: Standard with minimum climb of 500'/NM to 2200.

NOTE: Jet aircraft only.  
NOTE: Accelerate to 250K until leaving  
10000, if unable, advise ATC.



(CONTINUED ON FOLLOWING PAGE)

NOTE: Chart not to scale.

MAYNR THREE DEPARTURE (RNAV)  
(MAYNR3.MAYNR) 31OCT24

HOMESTEAD, FLORIDA  
MIAMI HOMESTEAD GENERAL AVIATION (X51)

(MAYNR3.MAYNR) 24305  
MAYNR THREE DEPARTURE (RNAV)

AL-10263 (FAA)  
MIAMI HOMESTEAD GENERAL AVIATION (X51)  
HOMESTEAD, FLORIDA



DEPARTURE ROUTE DESCRIPTION

TAKEOFF RUNWAY 10: Climb on heading 096° to 2000, then as assigned by ATC for vectors to cross AUSTI at or above 5000, thence. . . .

TAKEOFF RUNWAYS 18, 28, 36: Climb on heading assigned by ATC for vectors to cross AUSTI or above 5000, thence. . . .

. . . .on track 202° to MAYNR, then on assigned transition, maintain ATC assigned altitude. Expect clearance to filed altitude within 10 minutes after departure.

CANOA TRANSITION (MAYNR3.CANOA)

FUNDI TRANSITION (MAYNR3.FUNDI)

MAXIM TRANSITION (MAYNR3.MAXIM)

SE-3, 16 APR 2026 to 14 MAY 2026

SE-3, 16 APR 2026 to 14 MAY 2026