

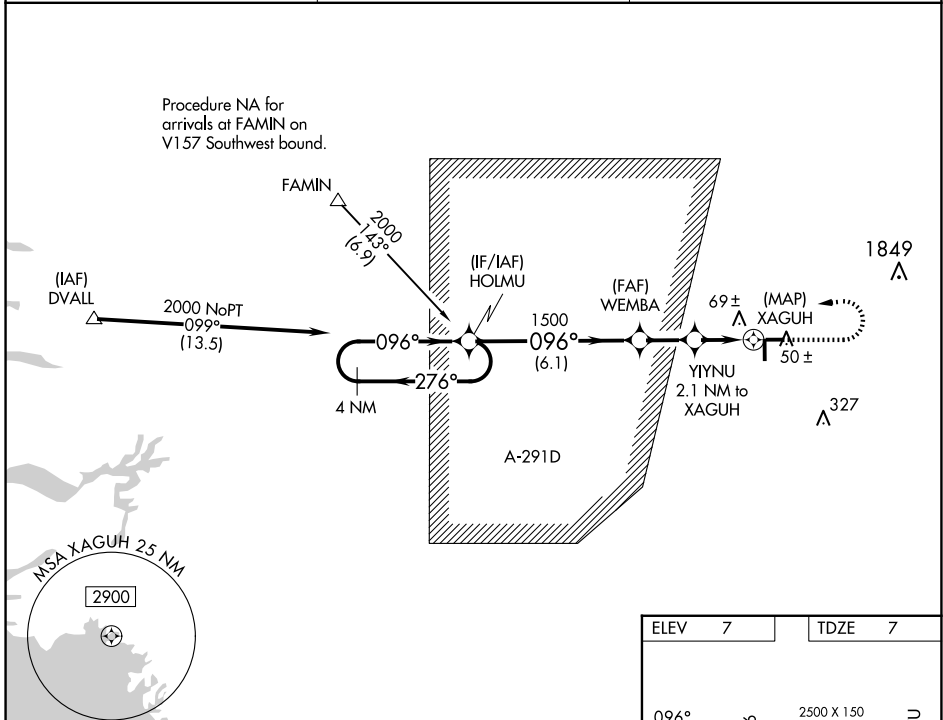
WAAS CH 42825 W10A	APP CRS 096°	Rwy Idg TDZE Apt Elev	3000 7 7
--	------------------------	-----------------------------	-------------------------------------

RNAV (GPS) RWY 10

MIAMI HOMESTEAD GENERAL AVIATION (X51)

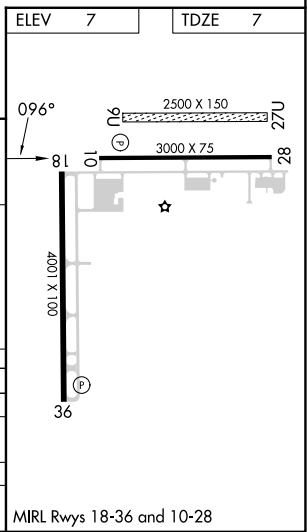
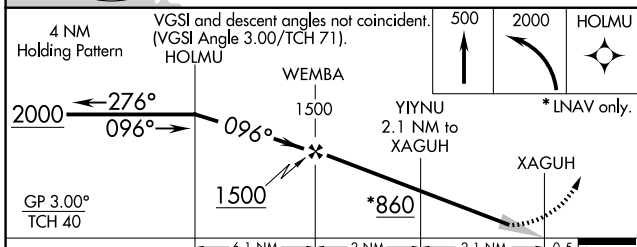
<p>NA</p> <p>Baro-VNAV NA when using Miami Exec altimeter setting. For uncompensated Baro-VNAV systems, LNAV/VNAV NA below -15°C (5°F) or above 54°C (130°F). DME/DME RNP-0.3 NA. When local altimeter setting not received, use Miami Exec altimeter setting: increase LPV DA to 284; increase LNAV/VNAV DA to 284; increase all MDA 40 feet.</p>	<p>MISSED APPROACH: Climb to 500 then climbing left turn to 2000 direct HOLMU and hold.</p>
---	---

AWOS-3 118.375	MIAMI APP CON 125.5 354.1	UNICOM 122.8 (CTAF)
--------------------------	-------------------------------------	-------------------------------



SE-3, 16 APR 2026 to 14 MAY 2026

SE-3, 16 APR 2026 to 14 MAY 2026



CATEGORY	A	B	C	D
LPV DA	257-7/8	250 (300-7/8)		NA
LNAV/VNAV DA	257-7/8	250 (300-7/8)		NA
LNAV MDA	320-1	313 (400-1)		NA
CIRCLING	380-1 373 (400-1)	460-1 453 (500-1)		NA