

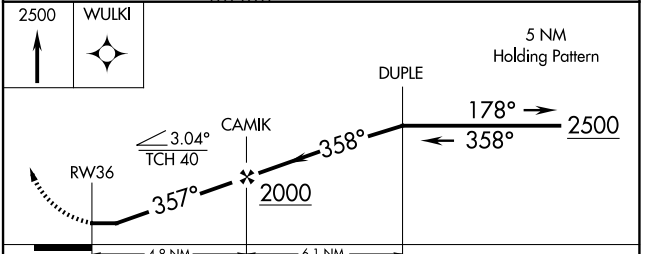
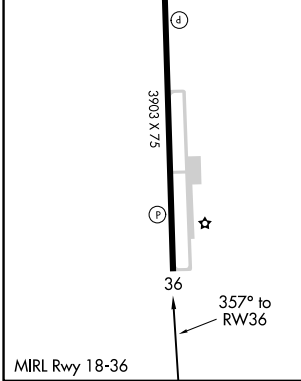
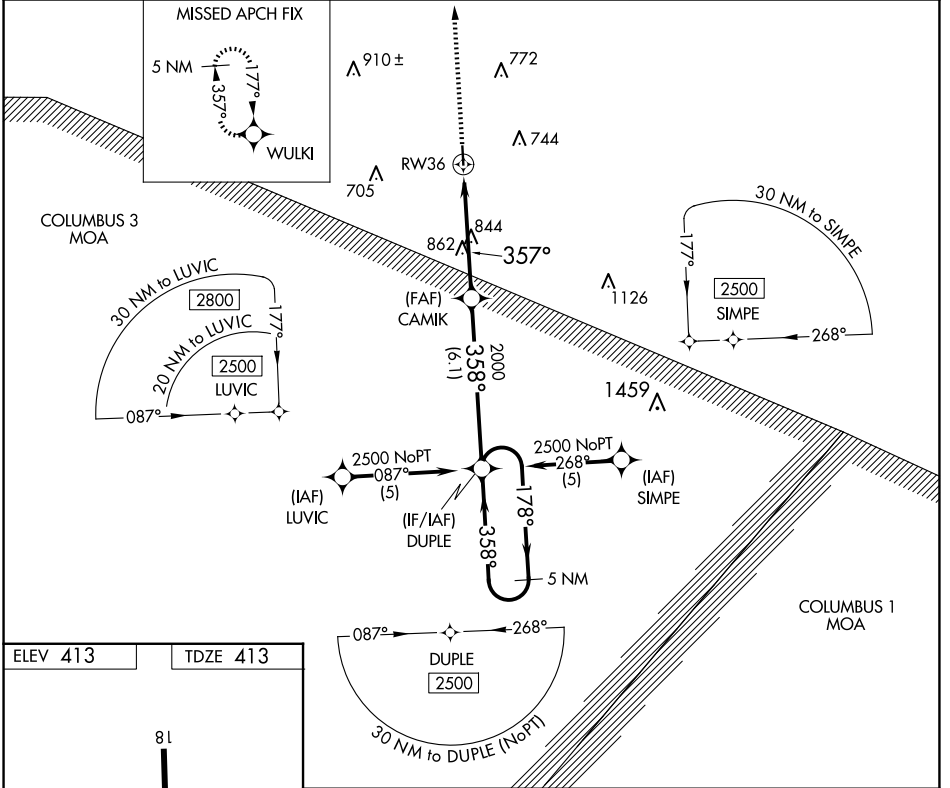
APP CRS **357°**  
 Rwy Idg **3903**  
 TDZE **413**  
 Apt Elev **413**

**RNAV (GPS) RWY 36**  
 NEW ALBANY/UNION COUNTY (M72)

**▼** Use Tupelo altimeter setting, if not received, use Oxford altimeter setting and increase all MDAs 20 feet. Procedure NA at night. DME/DME RNP-0.3 NA.  
**▲ NA** Visibility reduction by helicopters NA.

**MISSED APPROACH:** Climb to 2500 direct WULKI and hold.

<b>TUP ASOS</b> <b>133.525</b>	<b>MEMPHIS CENTER</b> <b>135.9 273.55</b>	<b>UNICOM</b> <b>122.8 (CTAF)</b>
-----------------------------------	----------------------------------------------	--------------------------------------



CATEGORY	A	B	C	D
LNAV MDA	1220-1 807 (900-1)	1220-1¼ 807 (900-1¼)	1220-2¼ 807 (900-2¼)	NA
CIRCLING	1220-1 807 (900-1)	1220-1¼ 807 (900-1¼)	1220-2¼ 807 (900-2¼)	NA

SC-4, 16 APR 2026 to 14 MAY 2026

SC-4, 16 APR 2026 to 14 MAY 2026