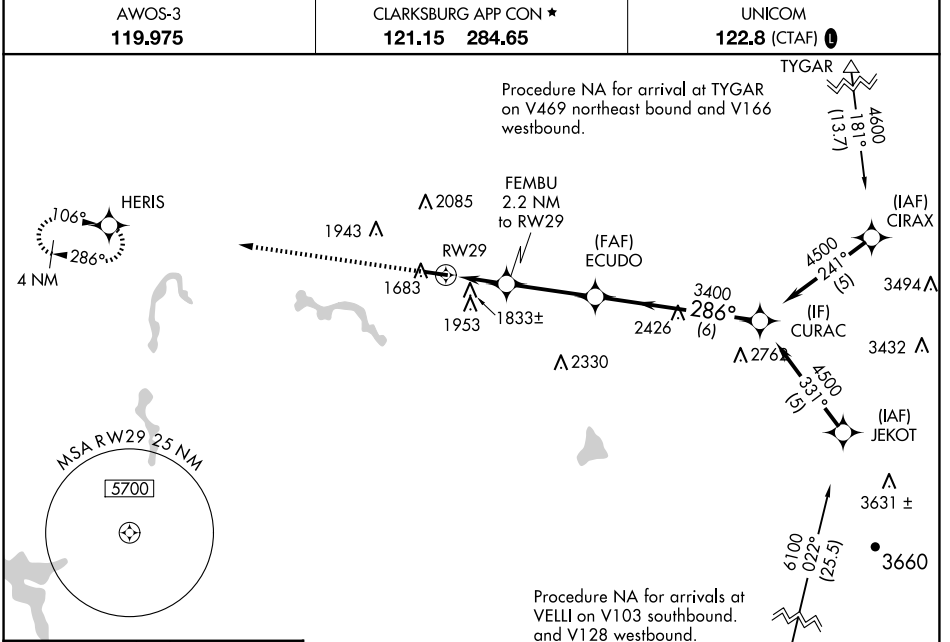


WAAS CH 56624 W29A	APP CRS 286°	Rwy ldg TDZE Apt Elev	4201 1635 1635
--	------------------------	-----------------------------	---

RNAV (GPS) RWY 29

UPSHUR COUNTY RGNL (W22)

RNP APCH.	<p>▲ For uncompensated Baro-VNAV systems, LNAV/VNAV NA below -18°C or above 54°C. Rwy 29 helicopter visibility reduction below ¾ SM NA.</p>	MISSED APPROACH: Climb to 4000 direct HERIS and hold.
AWOS-3 119.975		CLARKSBURG APP CON ★ 121.15 284.65



ELEV 1635	TDZE 1635
-----------	-----------

	4000	HERIS	VGSI and RNAV glidepath not coincident (VGSI Angle 3.00/TCH 27).		CURAC
	*LNAV only.	FEMBU 2.2 NM to RWY 29	ECUDO 3400		4500
		*1.4 NM to RWY 29			GP 3.00° TCH 40
CATEGORY	A	B	C	D	
LPV DA	1885-1	250 (300-1)		NA	
LNAV/VNAV DA	2125-1¾	490 (500-1¾)		NA	
LNAV MDA	2100-1	465 (500-1)	2100-1¾ 465 (500-1¾)	NA	
CIRCLING	2240-1 605 (700-1)	2260-1 625 (700-1)	2400-2¼ 765 (800-2¼)	NA	

NE-4, 16 APR 2026 to 14 MAY 2026

NE-4, 16 APR 2026 to 14 MAY 2026